

PORTFOLIO

Danielle Goergen

drawn to life



LXMBRG AIRPORT

WOMAN READING MAGAZINE OVER TIME
POSITION CHANGES - LEGS AND SEAT
SCARF SLIPS OFF SHOULDER
PAGES FLIPPED - HANDS CHANGE
BAG ON FLOOR FALLS SLOWLY

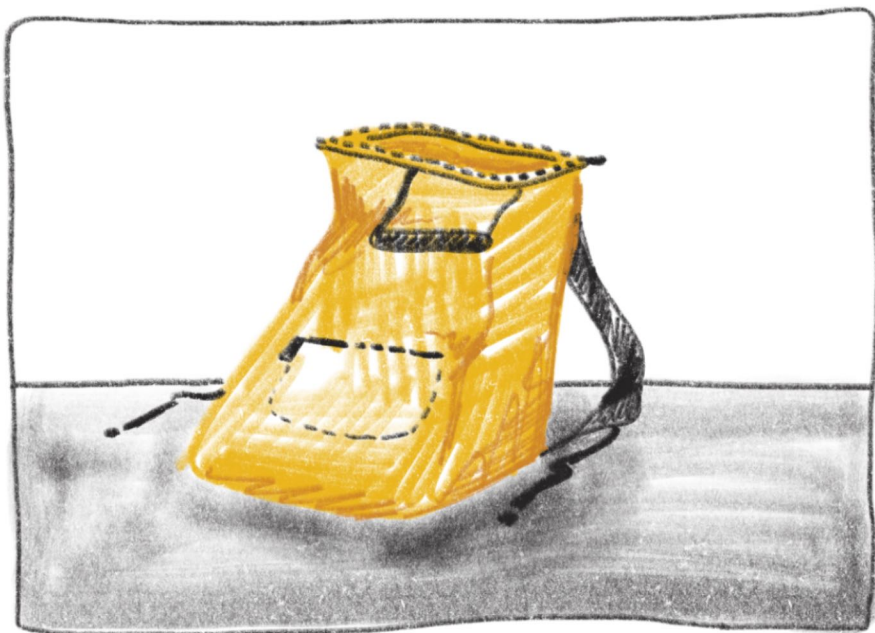


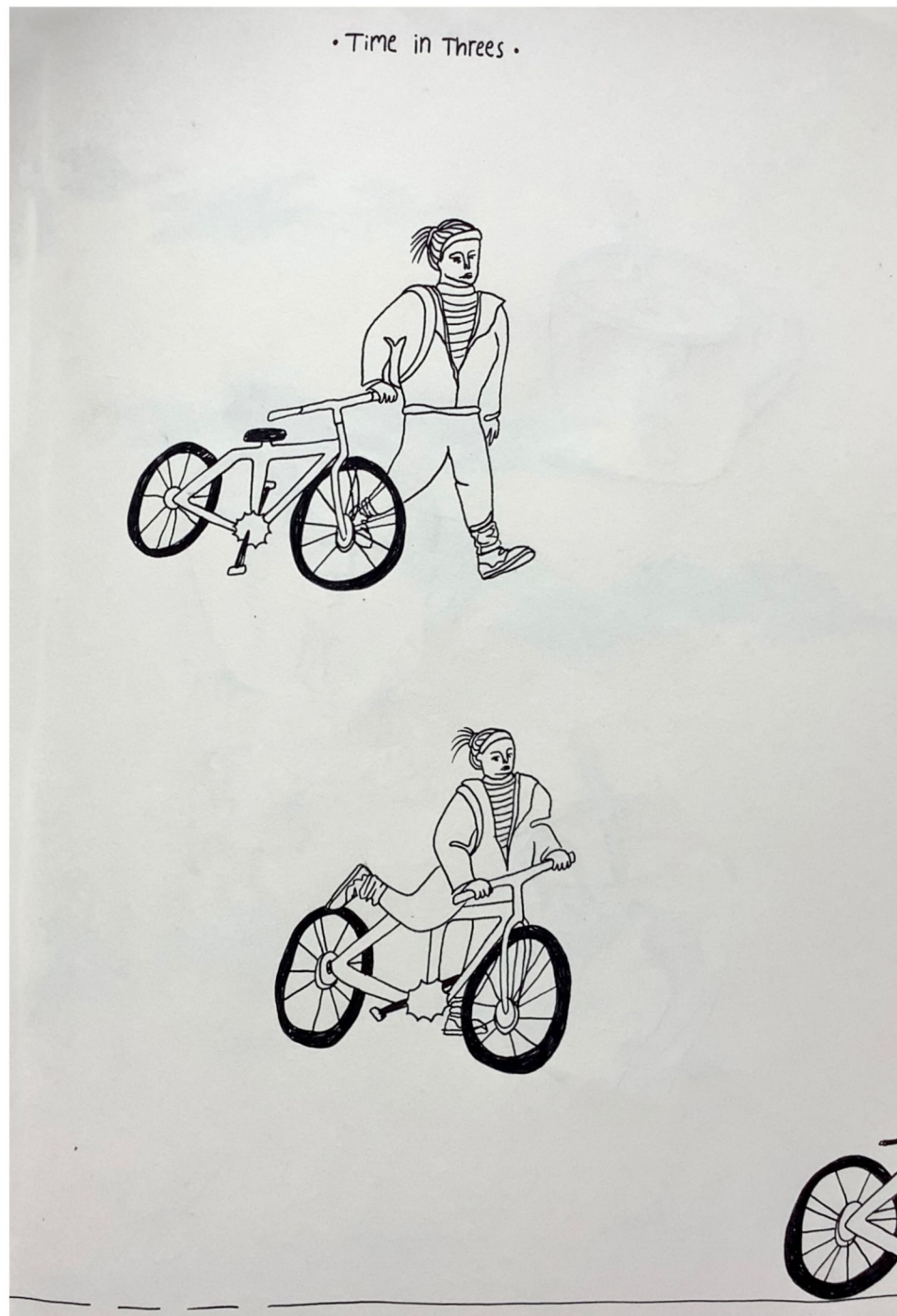
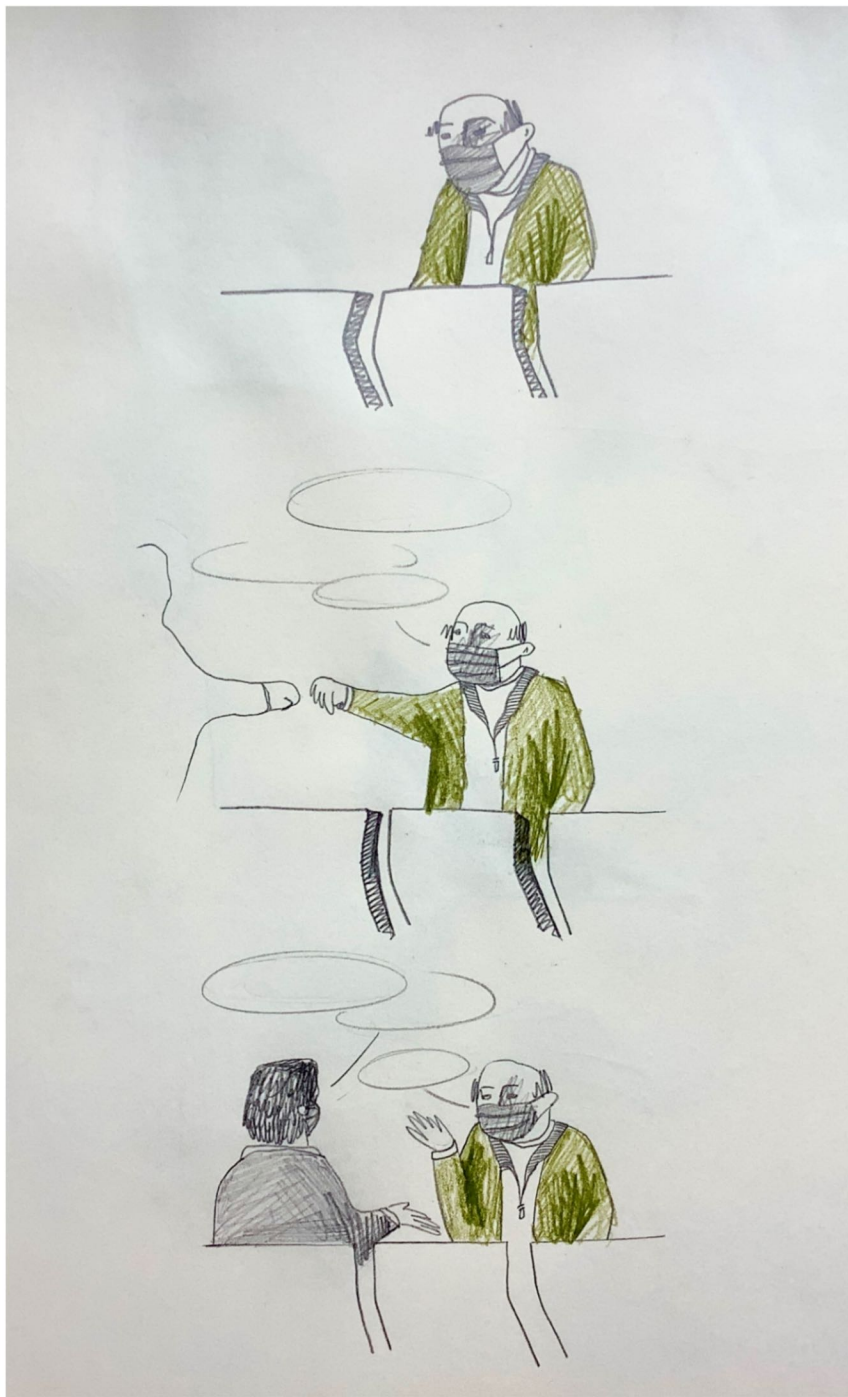
JACKET FLOPS ONTO
THE FLOOR

JACKET FELL OFF THE
SUITCASE. THE MAN PICKED IT UP
AND LAYED IT ON THE SEAT
NEXT TO HIM...

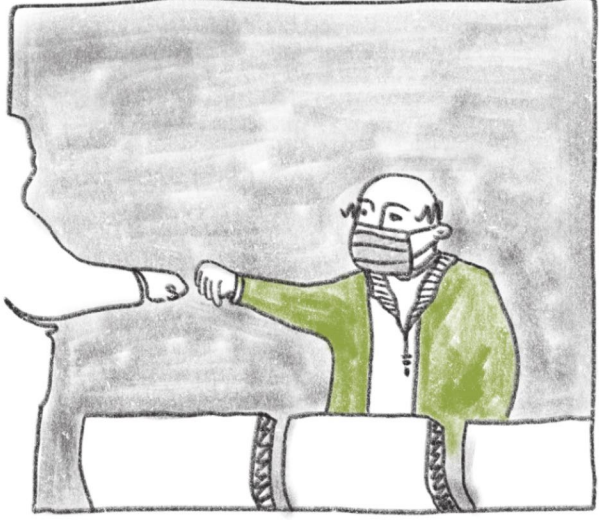


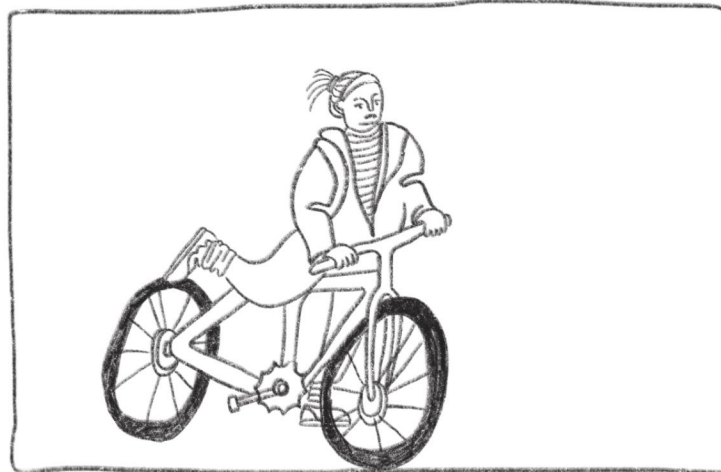
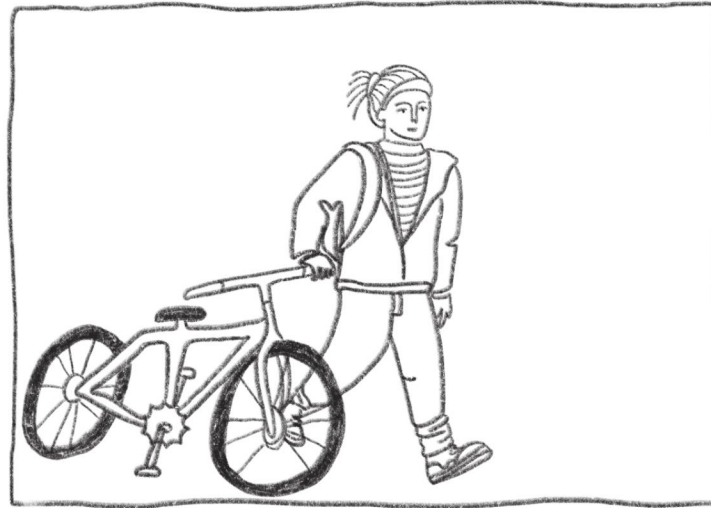
I had forgotten my
"drawn to life"
sketchbook, so I used my
module sketchbook

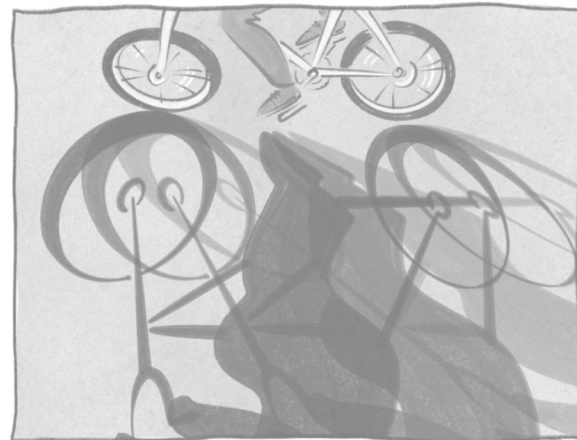
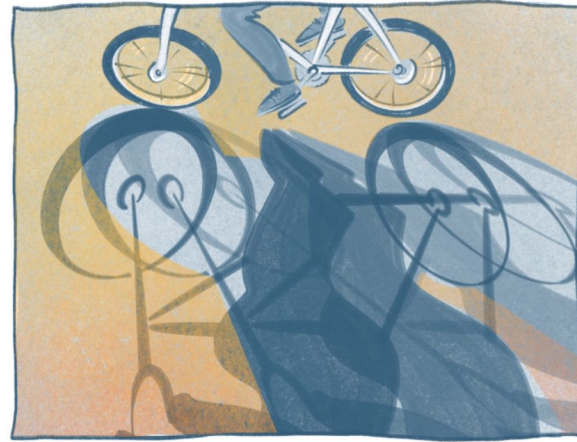
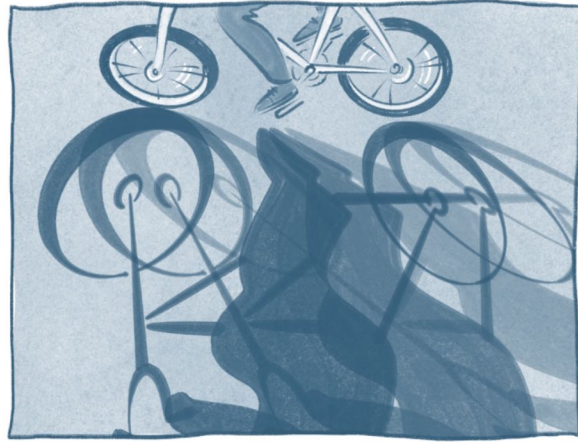




in and out of frame



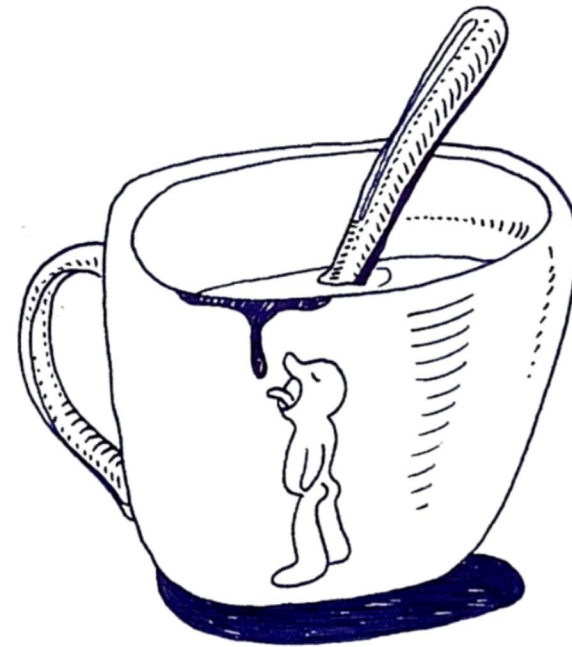




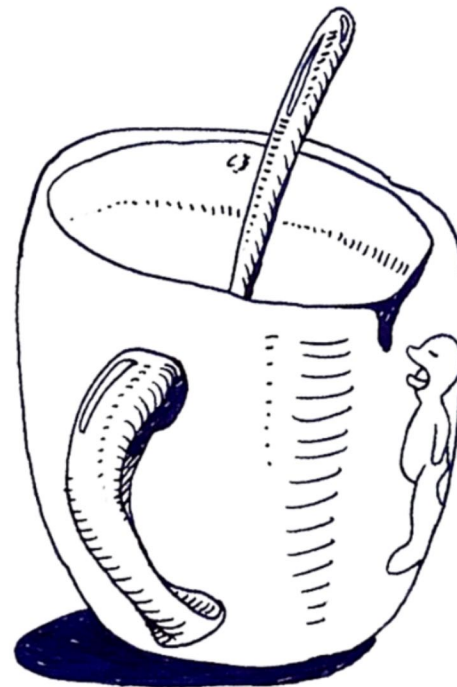


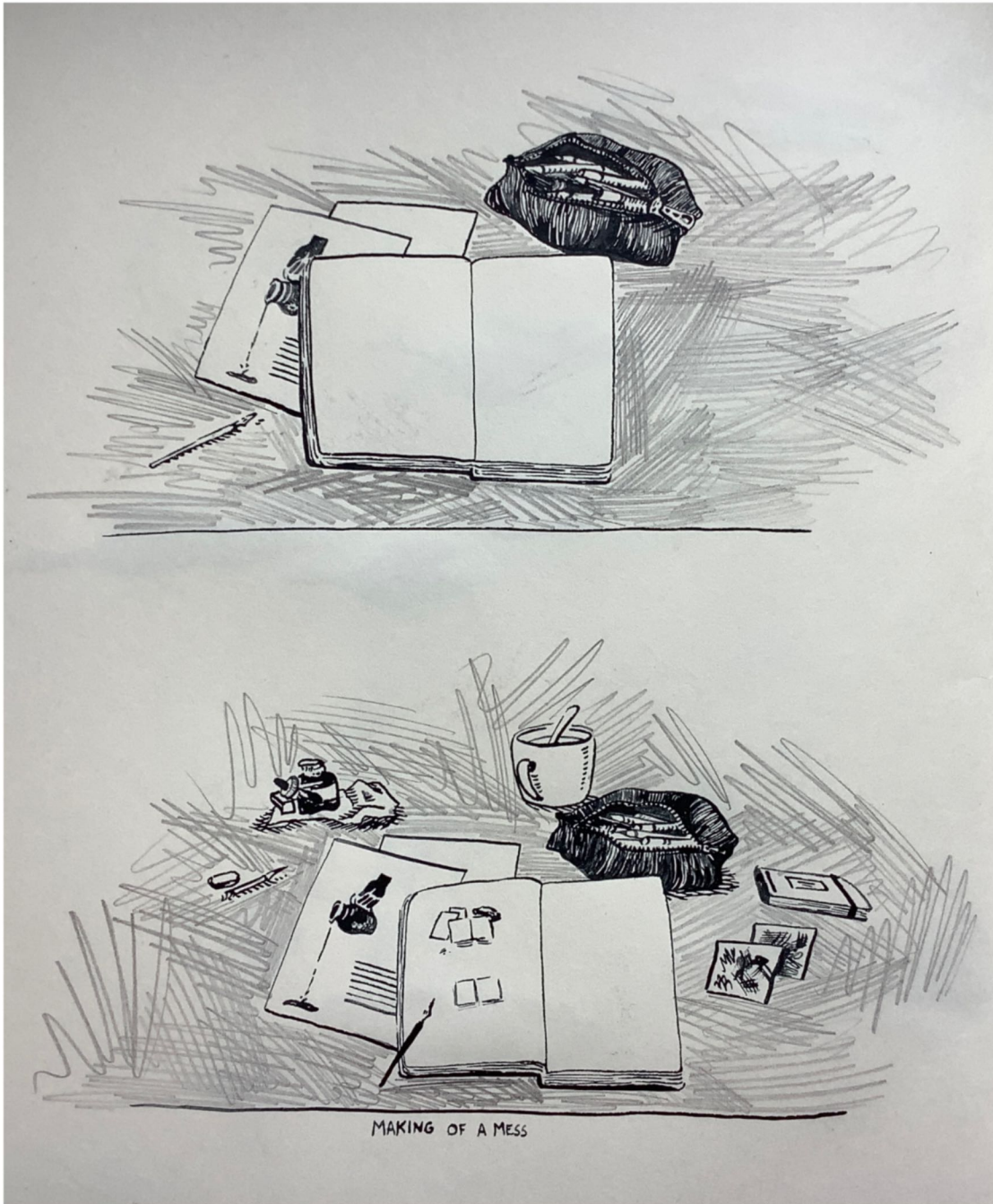


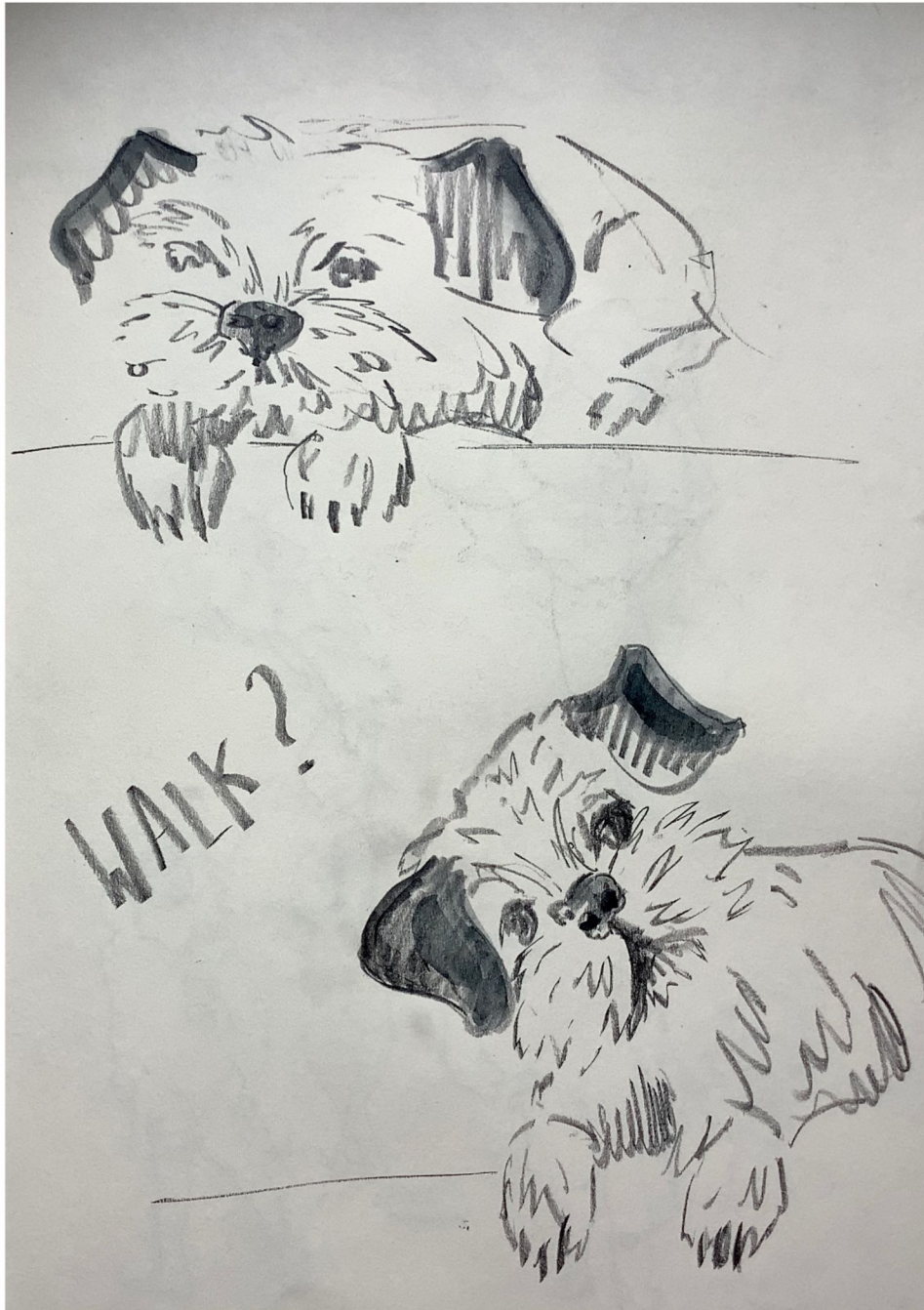
* SLURP *



* SiP *



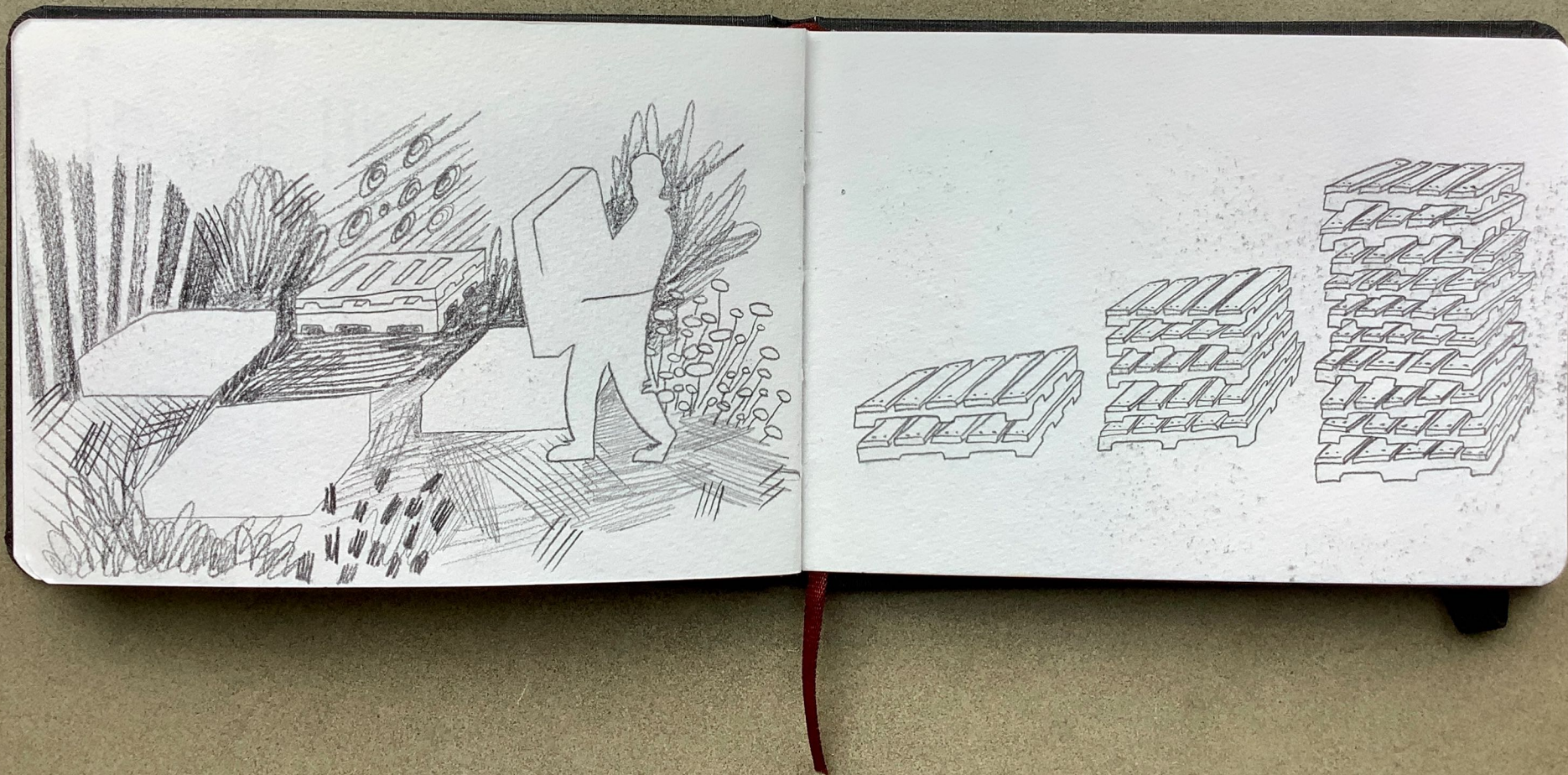




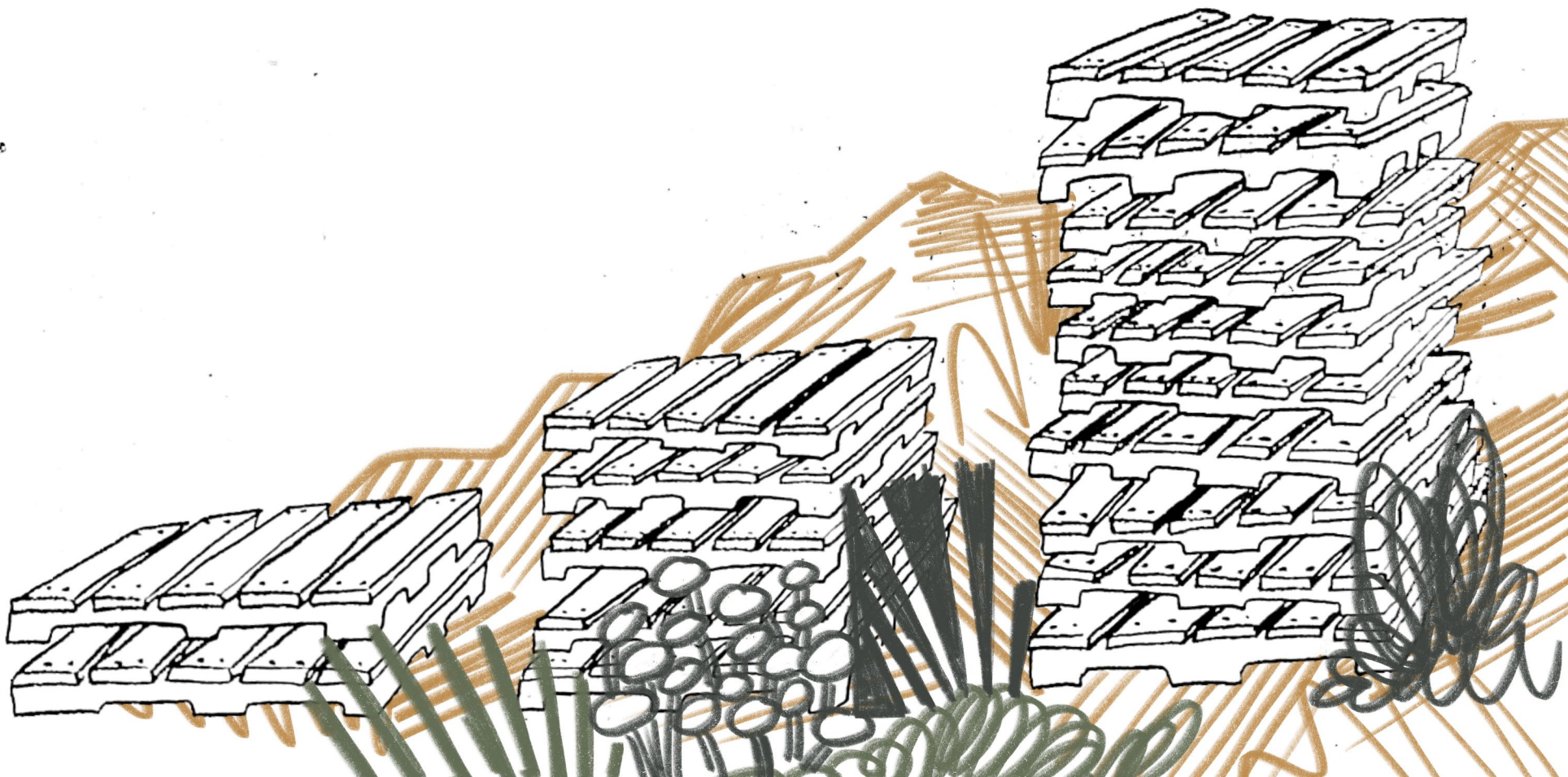
you dropped
something...

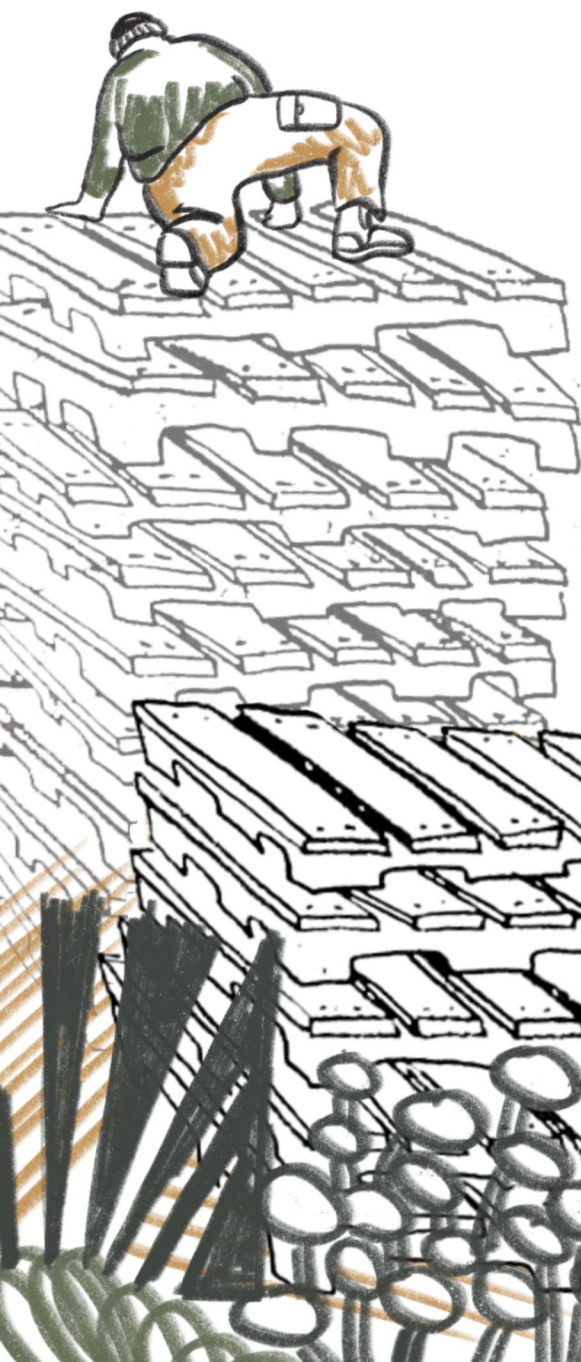






In Luxembourg there is a yearly tradition called "Borrëgbrennen" where we build big wooden structures and burn them. They are often in form of a cross or a "Borrëg", meaning castle, and are symbolic for winter. The tradition is to burn the winter and chase it away. I am part of the youth group that hosts the event and documented the building process over several weeks. Throughout the "drawn to life" sketches, you'll see the structure grow higher and see us working.

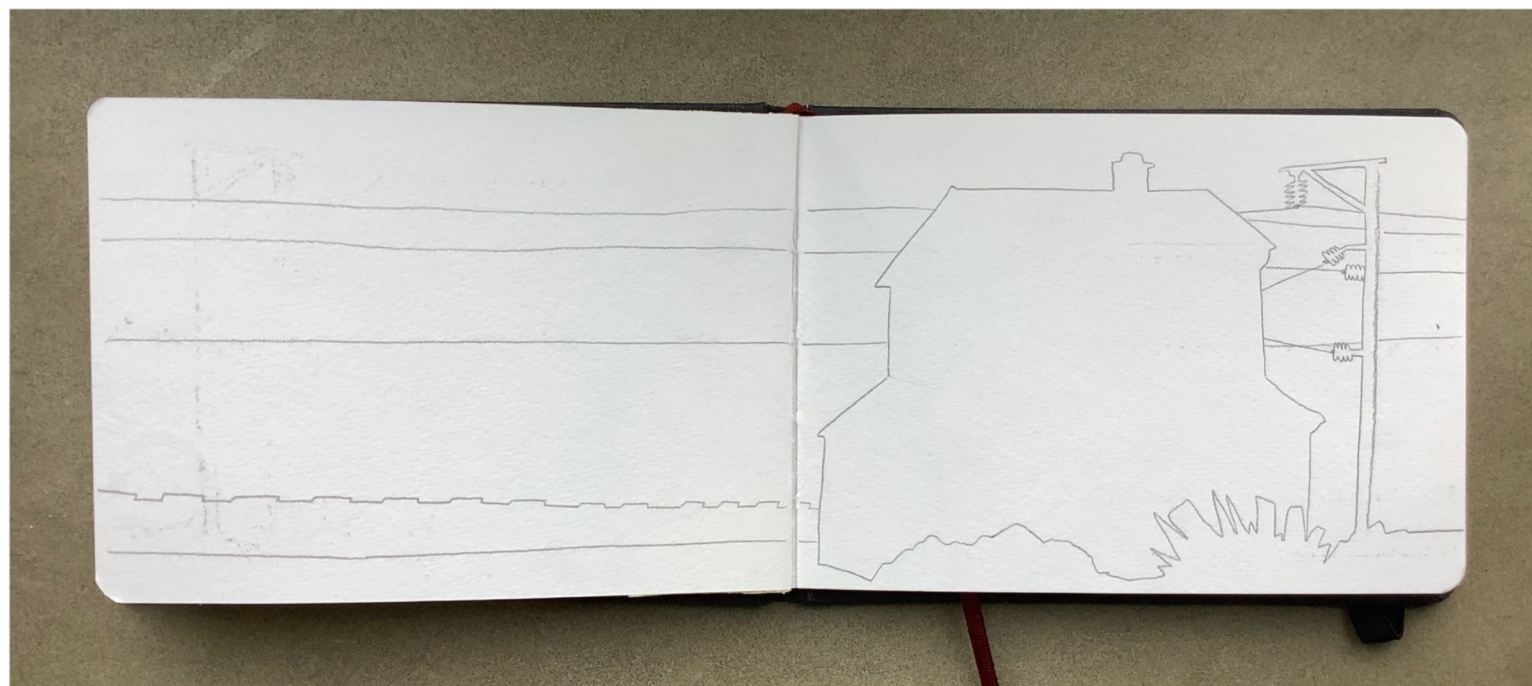




I recently did a reportage on the rail heritage in Luxembourg. Sadly, many of the old railway houses are being torn down despite their typical historic look and cultural value. The old railway buildings are important witnesses of the country's history and it is a shame that they are disappearing.

With the TV reportages, we are trying to save the buildings. Especially since the laws around heritage and culture are being changed. This is a more emotional approach. I wanted to capture what happens when history is erased in the name of progress and growth.



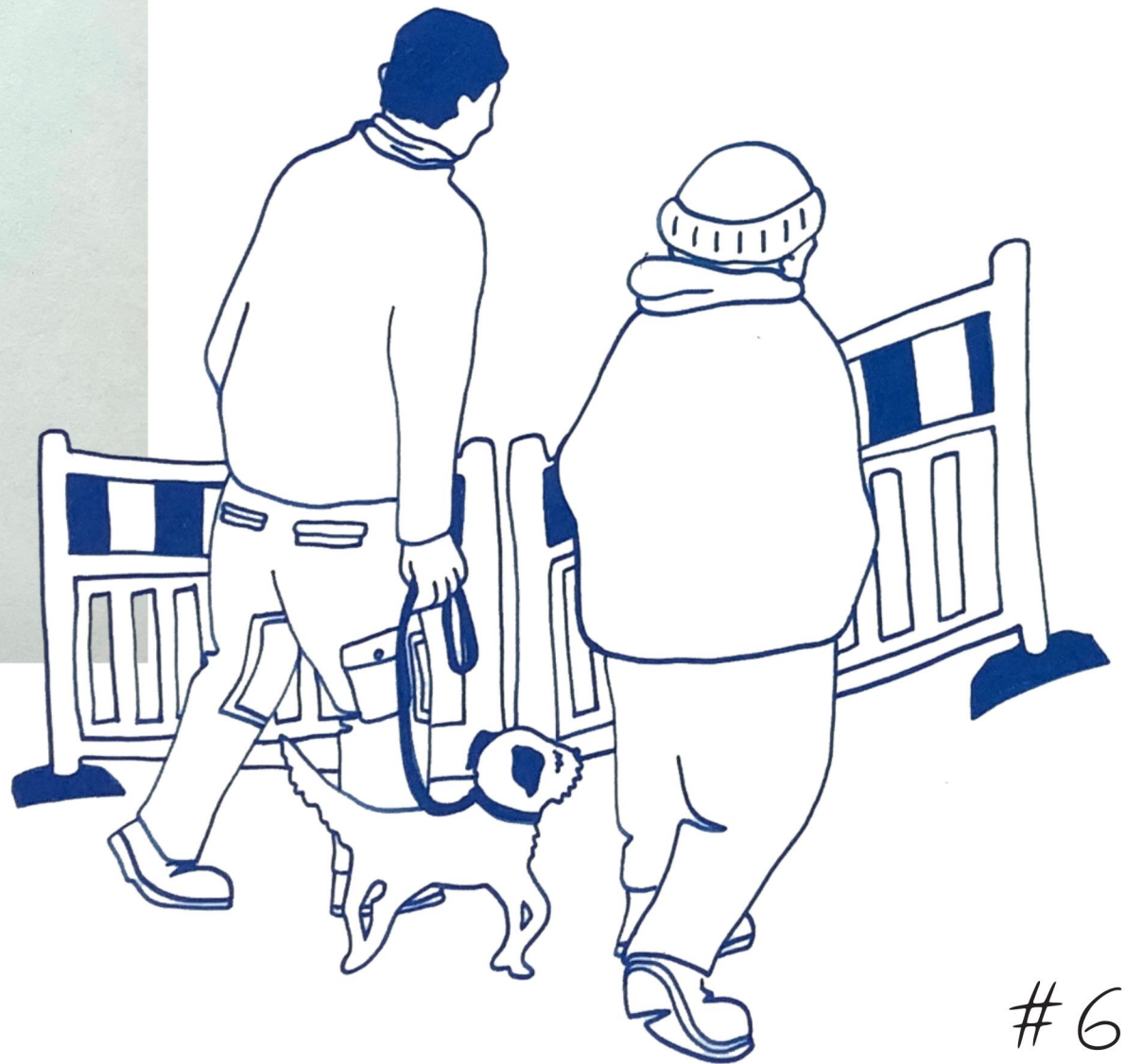




WHEN HISTORY
IS ERASED...



WHEN HISTORY
IS ERASED...



#6

My brother and I walk my dog together every day after work and stop by my grandmother's house.

she lives alone.

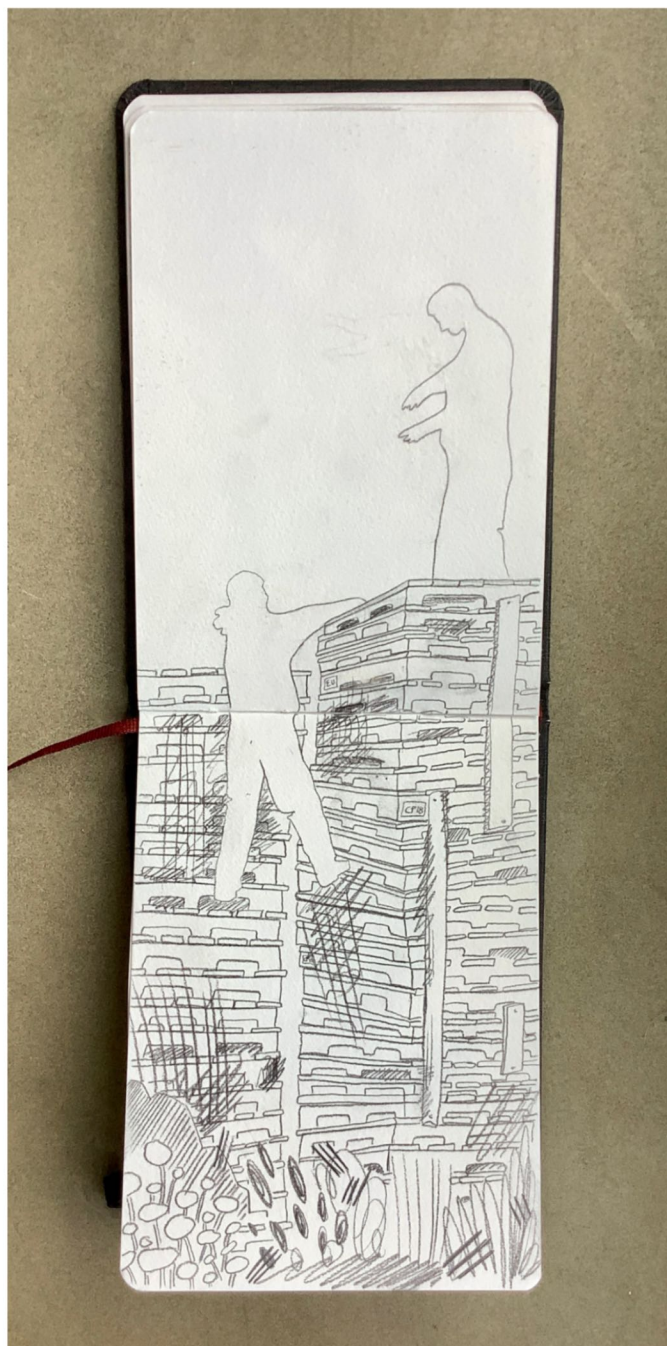
We started this habit during the first lockdown and have grown closer. It gives us time to talk and reflect. Time moves slower at my grandmother's place as we sit over coffee and talk for hours.

My Boma's (grandmother's)
brother passed recently...I
am happy to have drawn
this sketch only a couple of
days beforehand

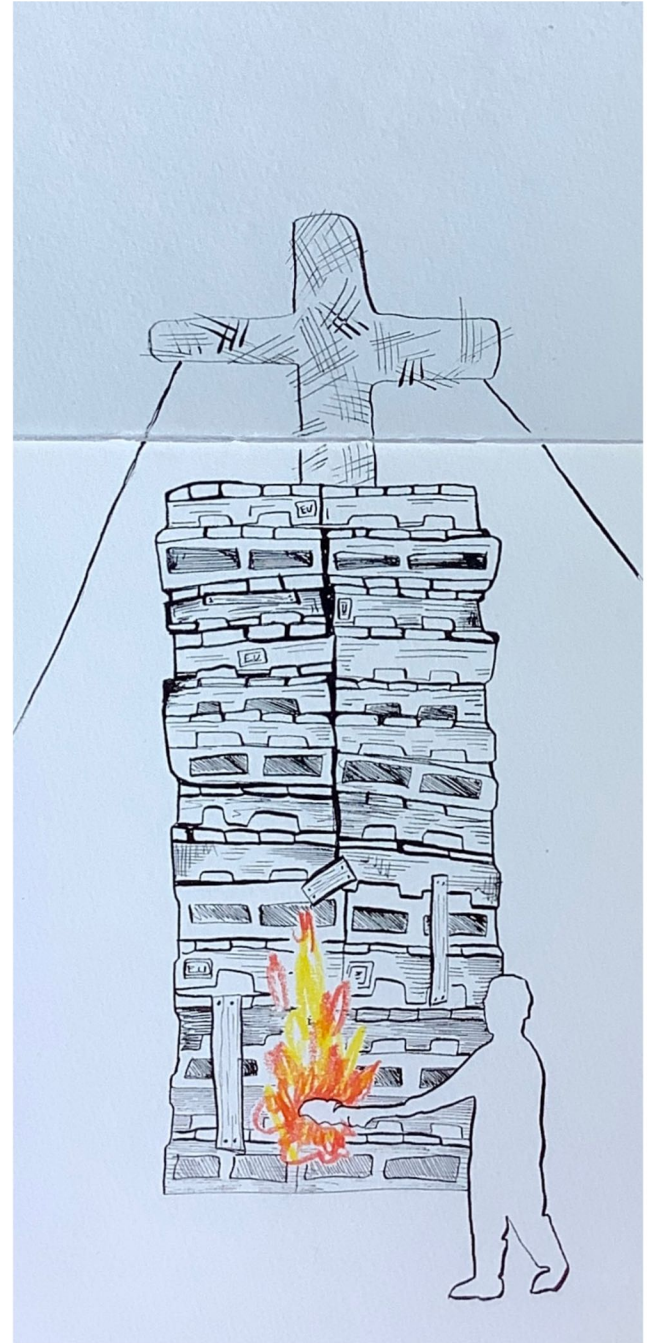
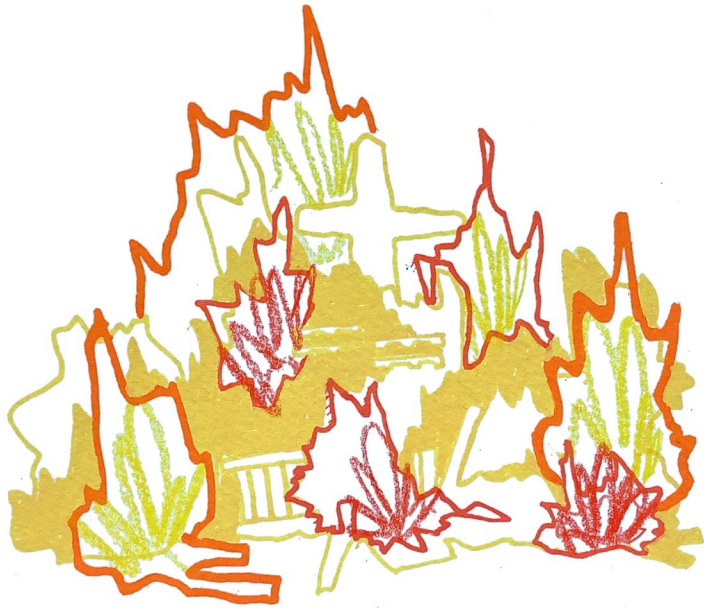


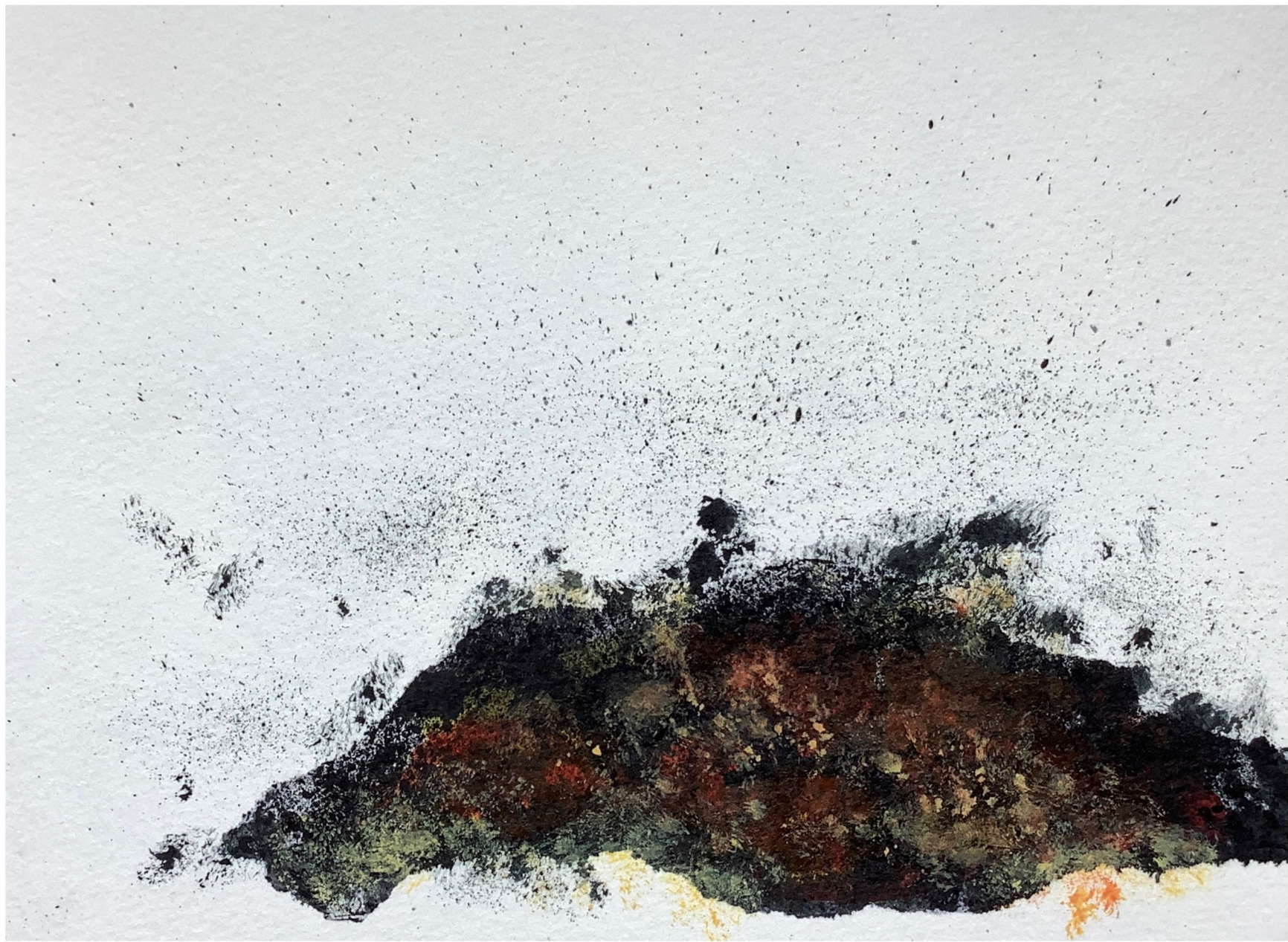


ech kucken se alt hejarnado ...
I look at the photographs
sometimes...



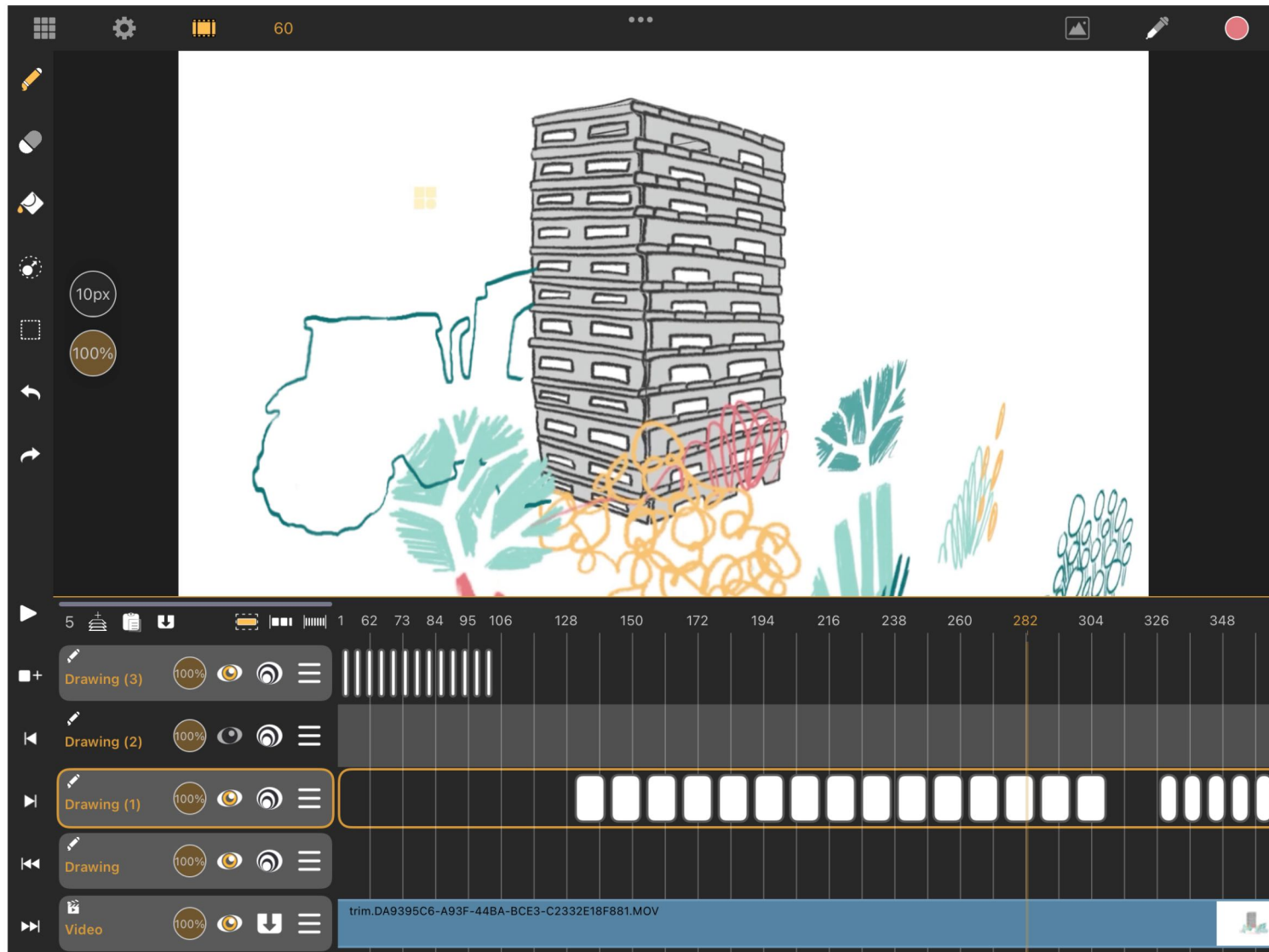








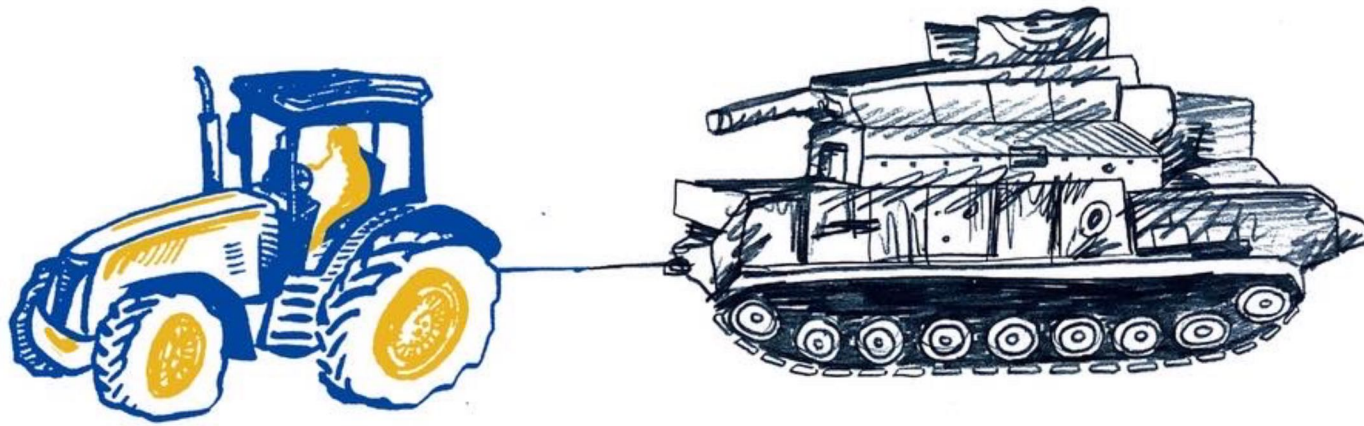




Test animation created with MENTAL CANVAS and CALLIPEG:
<http://vimeo.com/693202551>

For Ukraine

following the war from afar

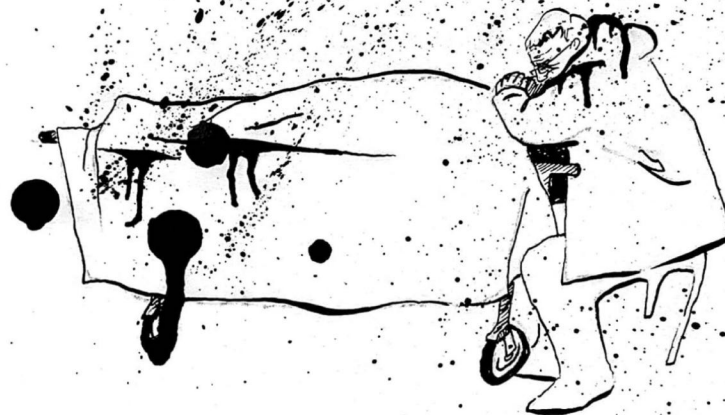


sketches drawn from journalist videos and
reporting photographers over the past weeks

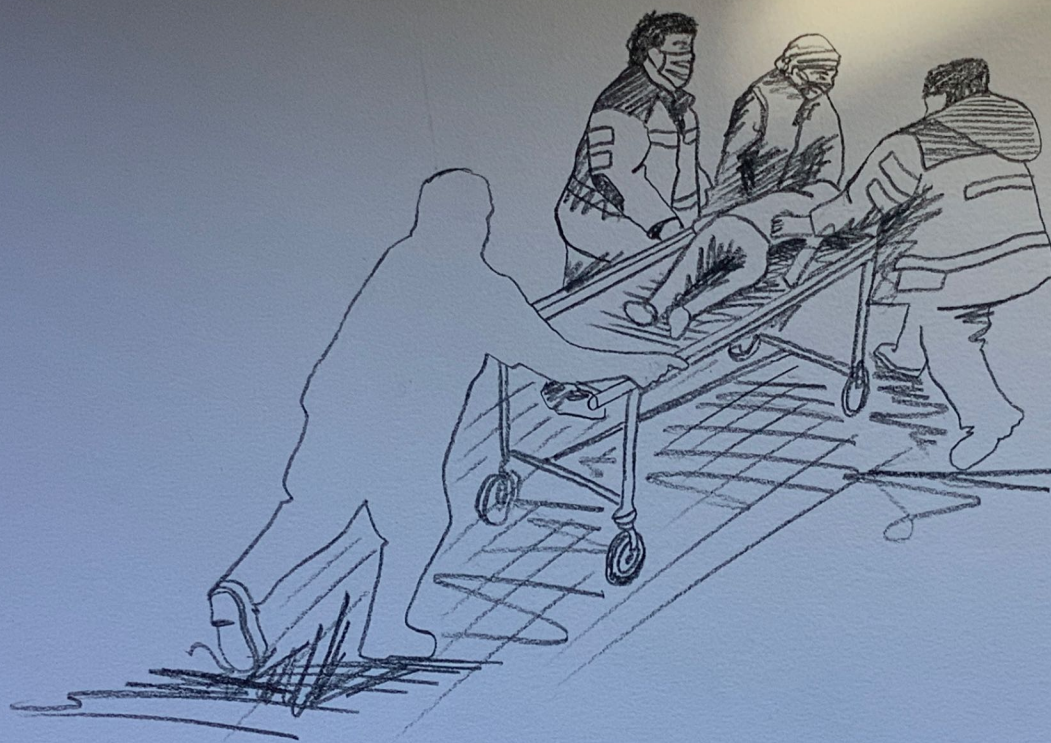
#10, 11, 12



STEINBACH

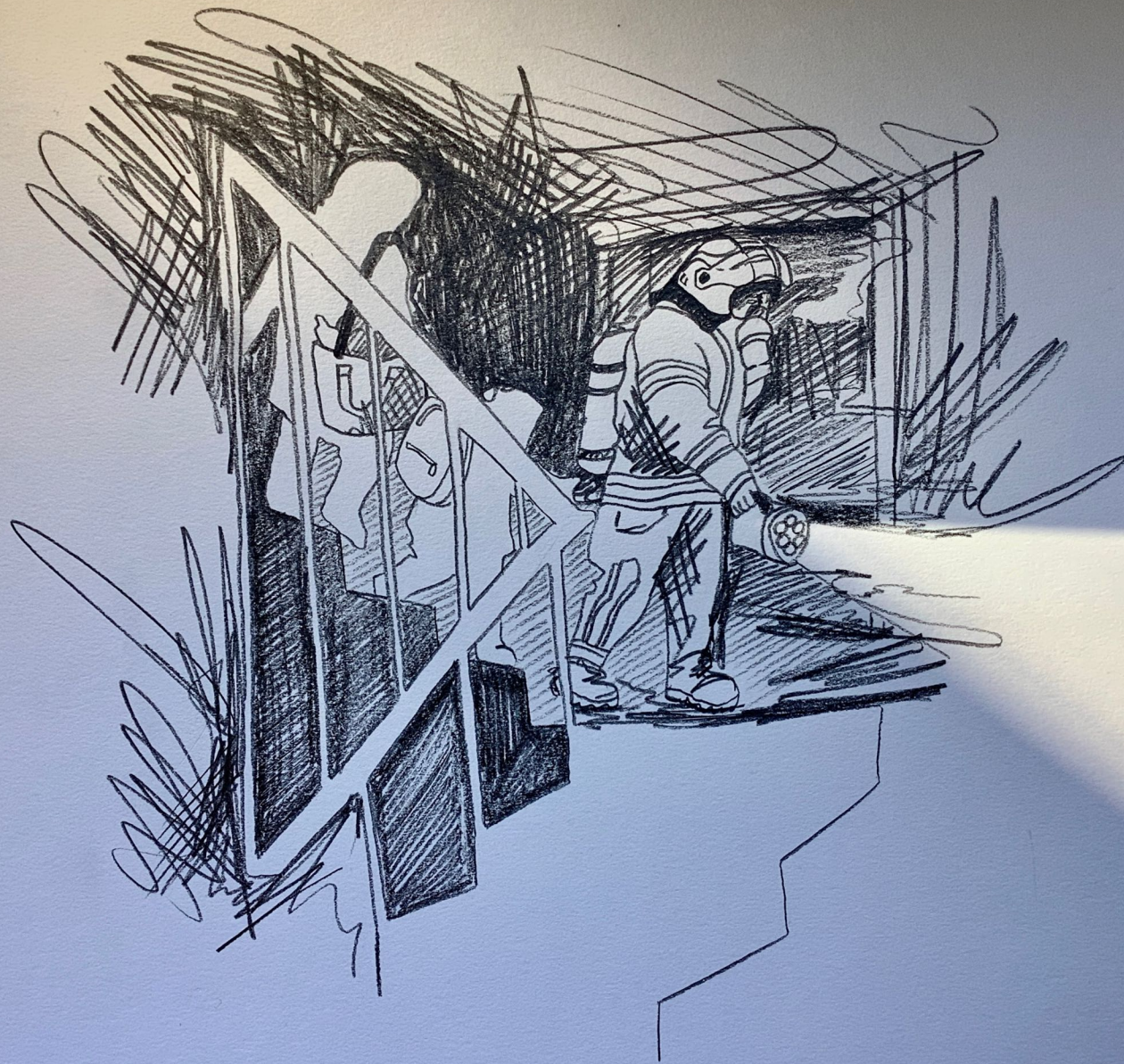


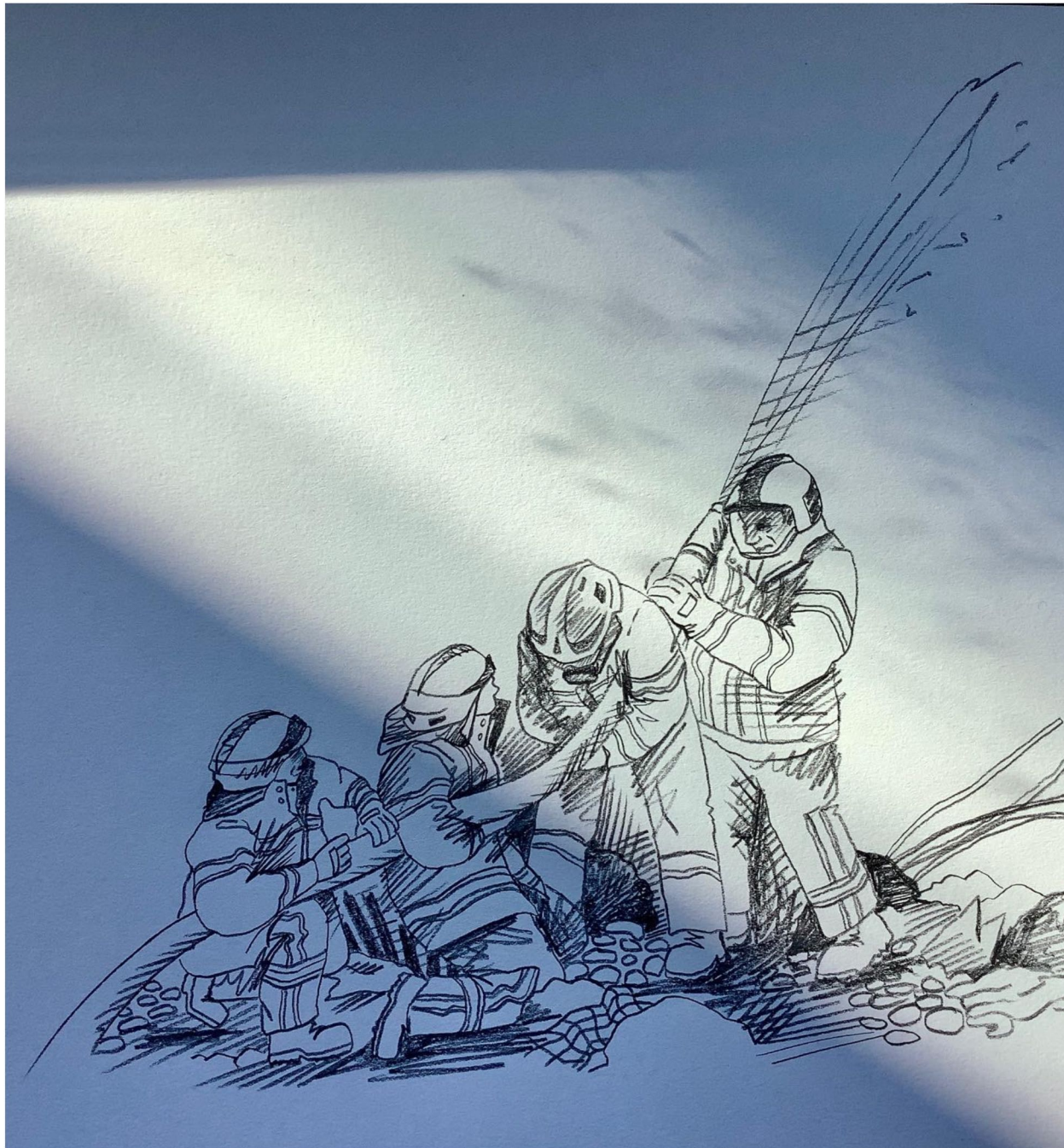




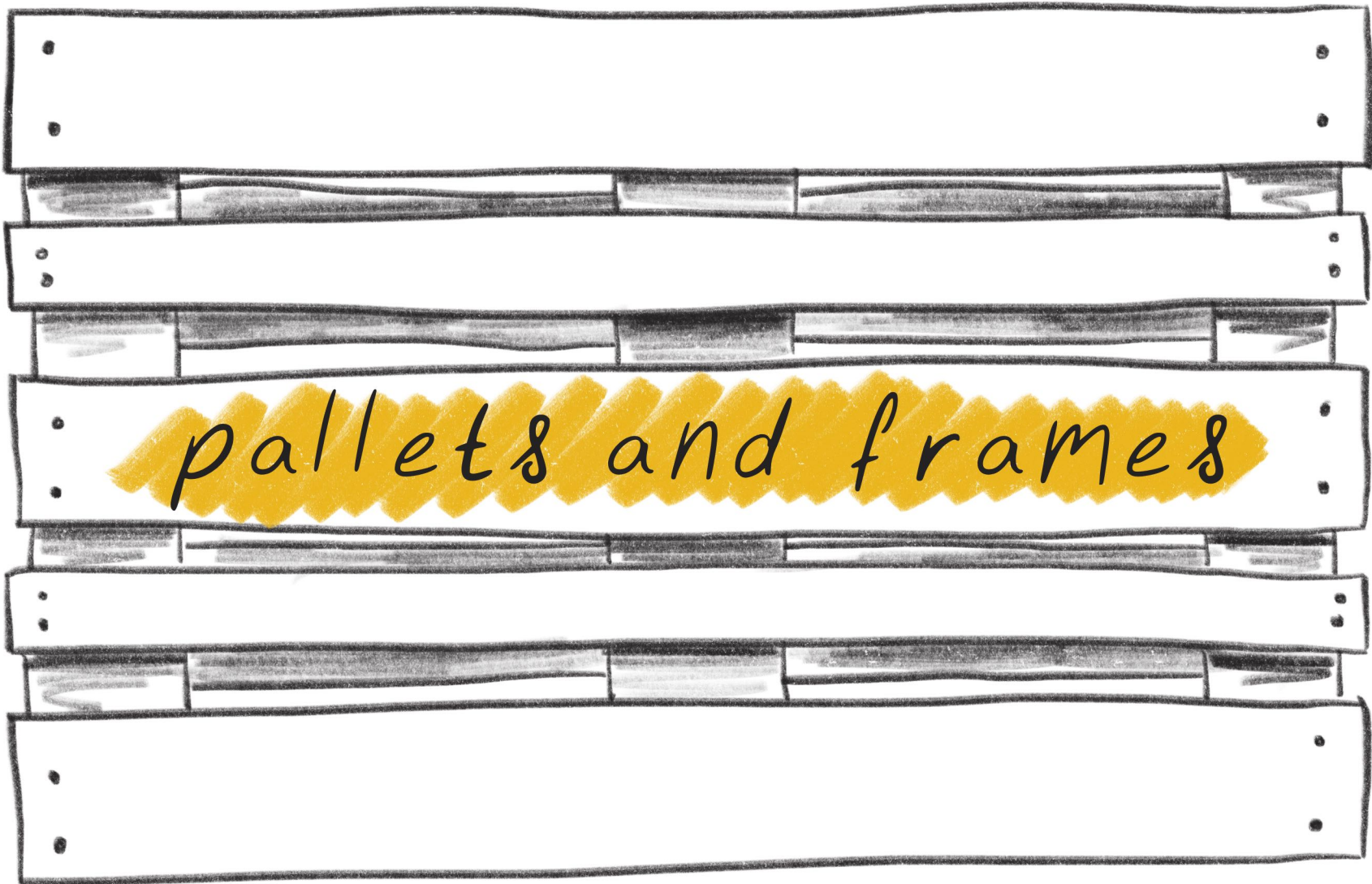


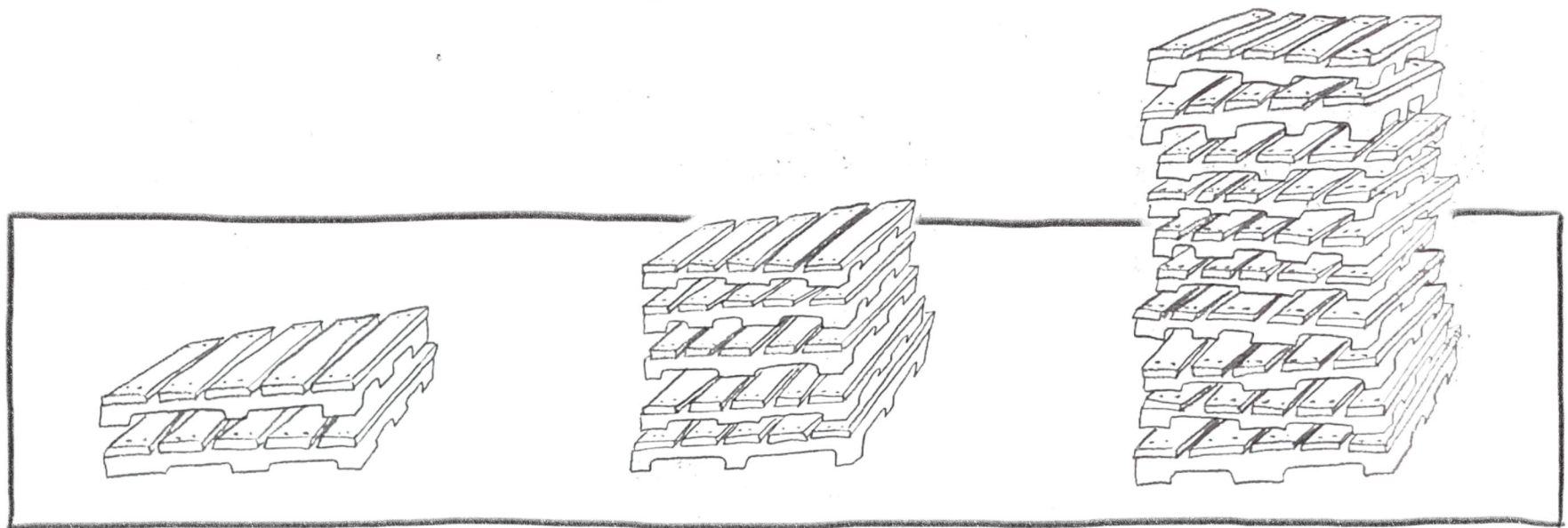
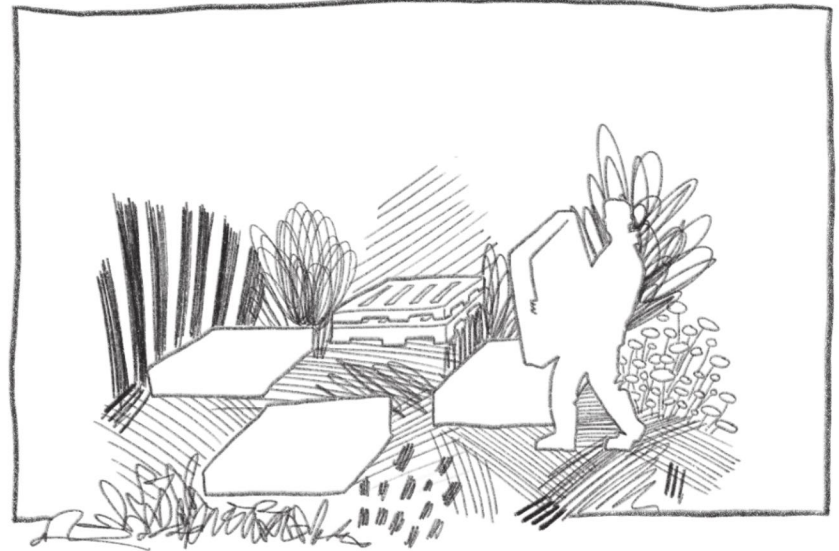
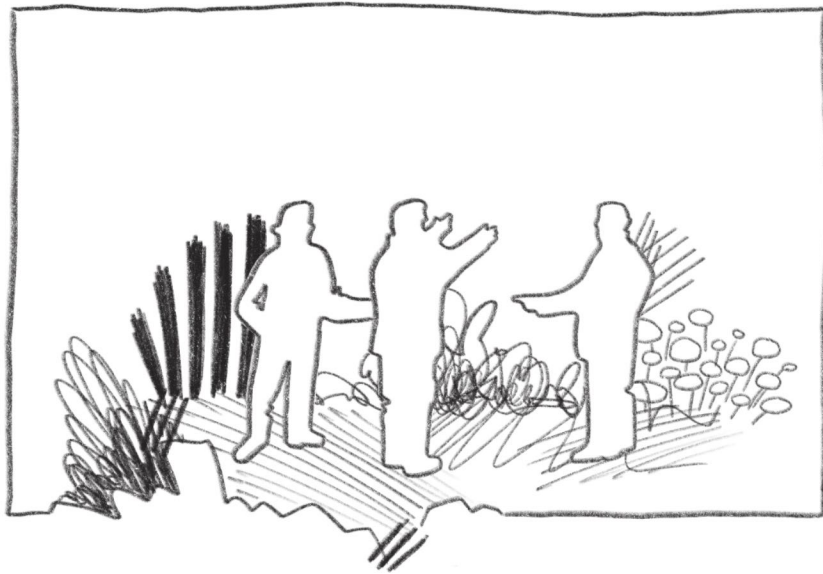






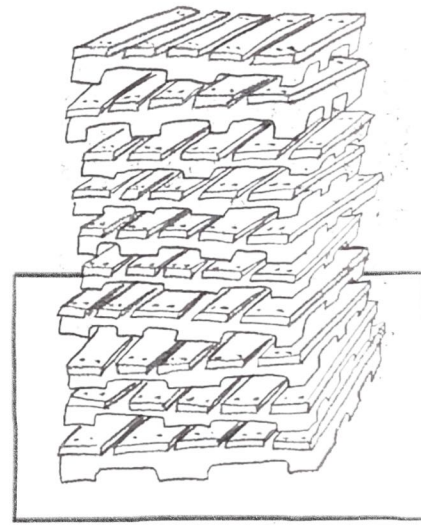
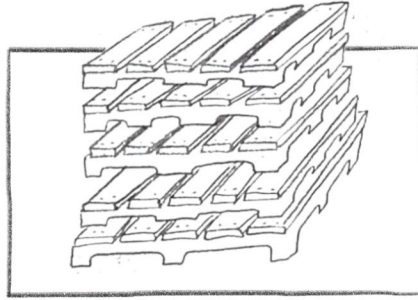
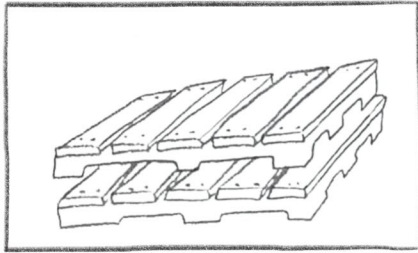




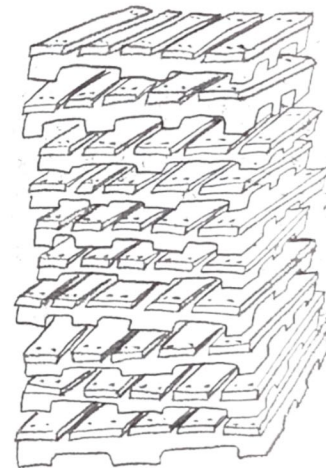
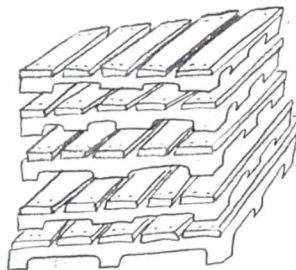
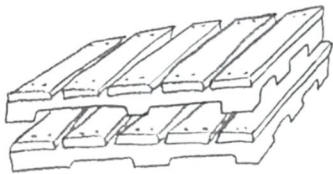


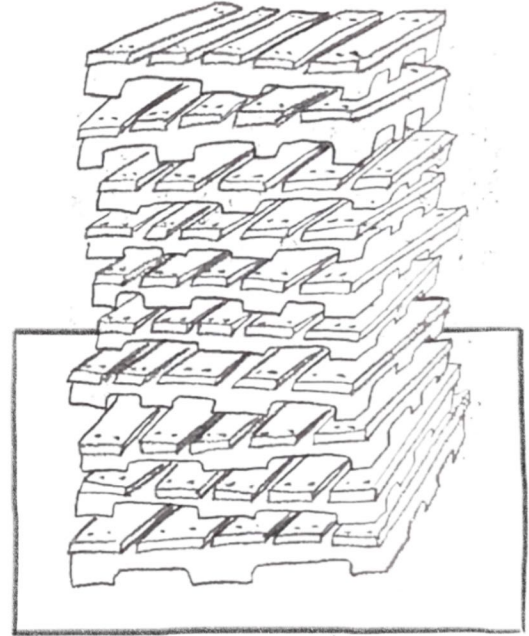
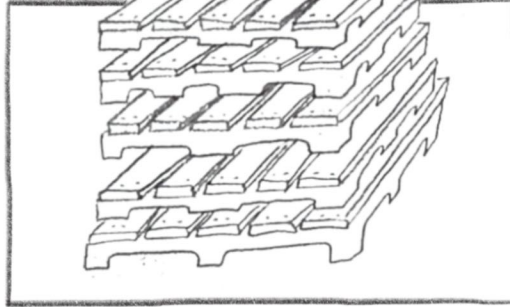
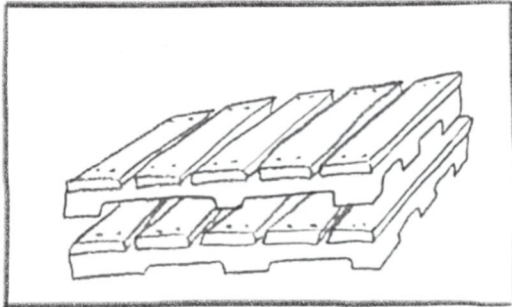
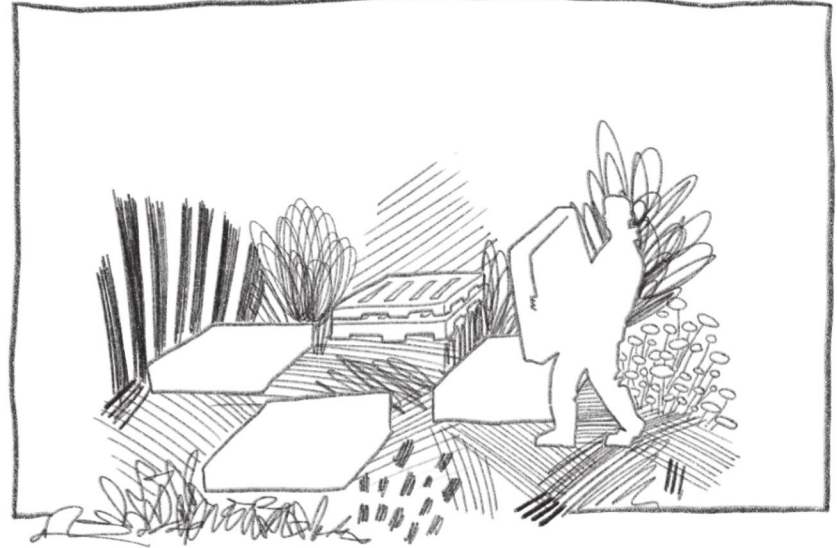
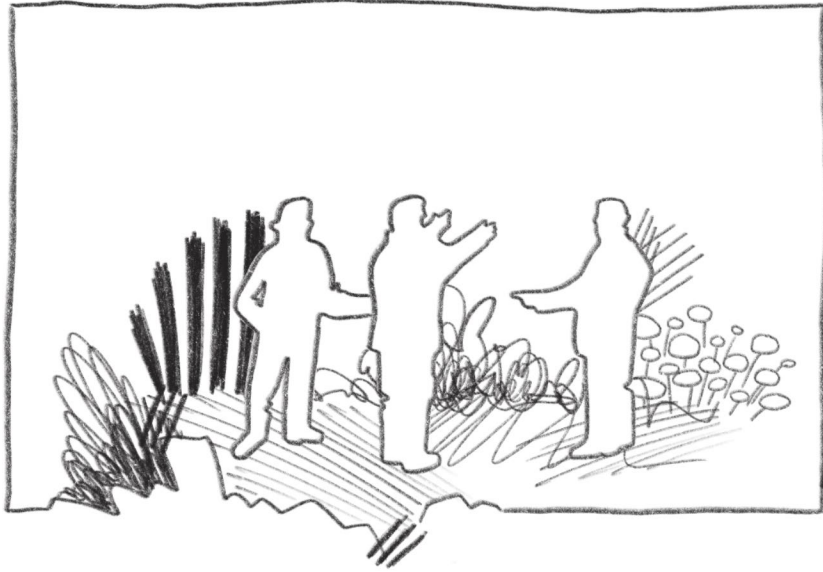
1

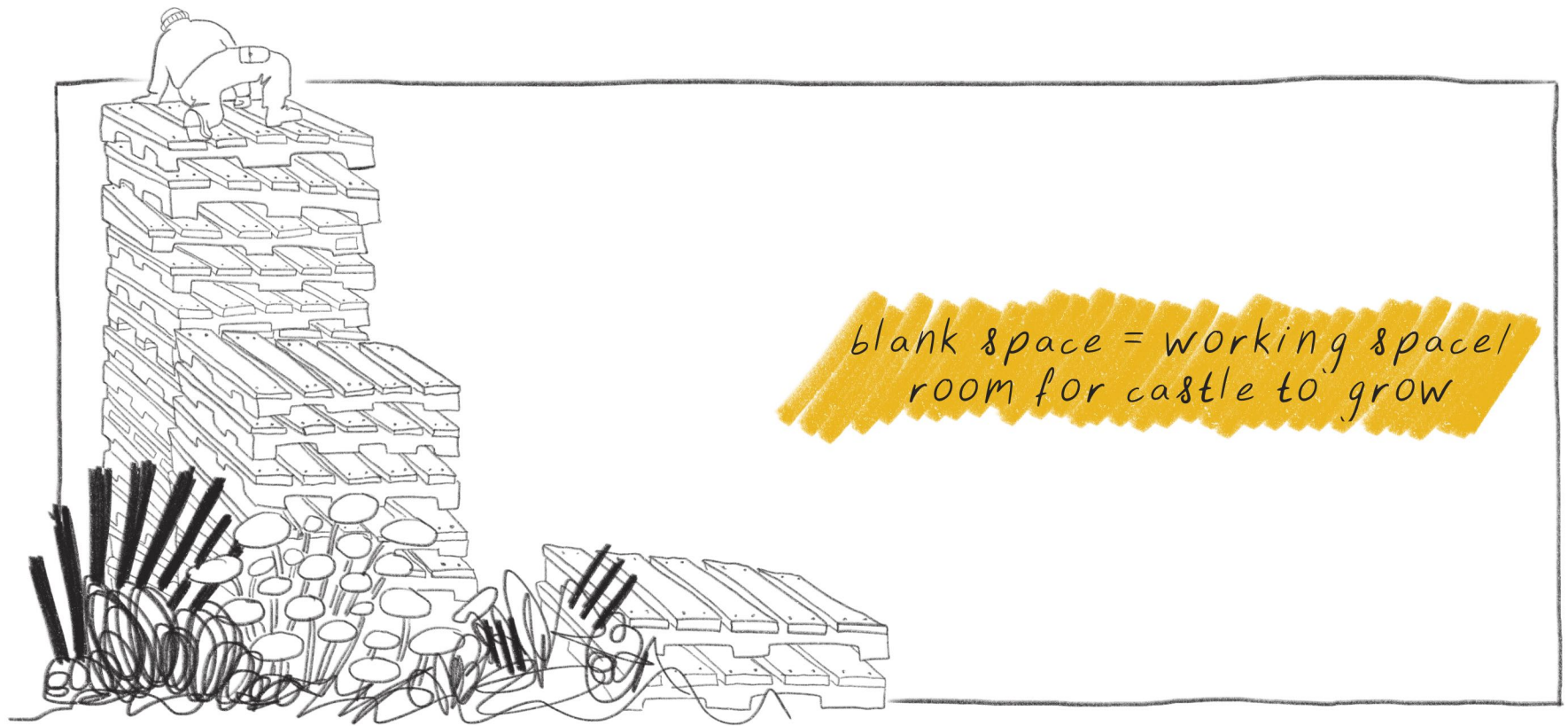
separate frames nicely show the
working rhythm and continuity



2

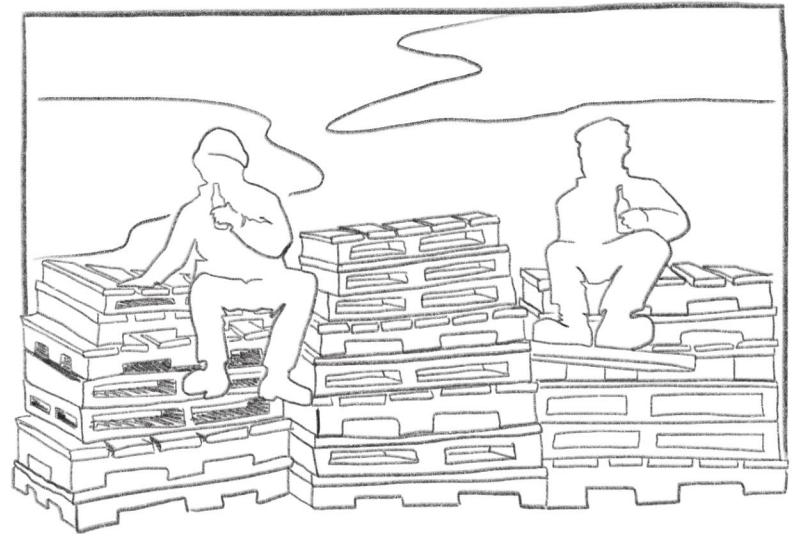
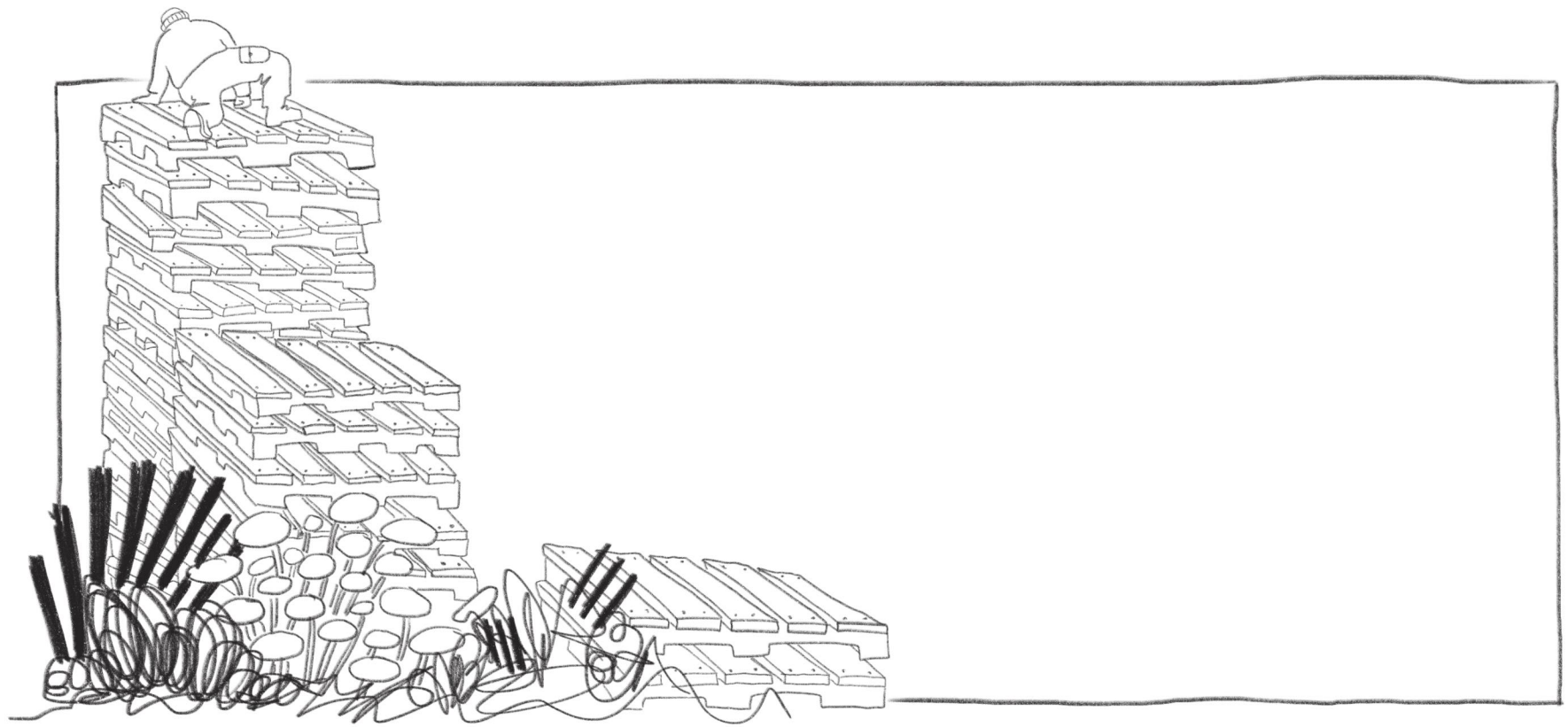


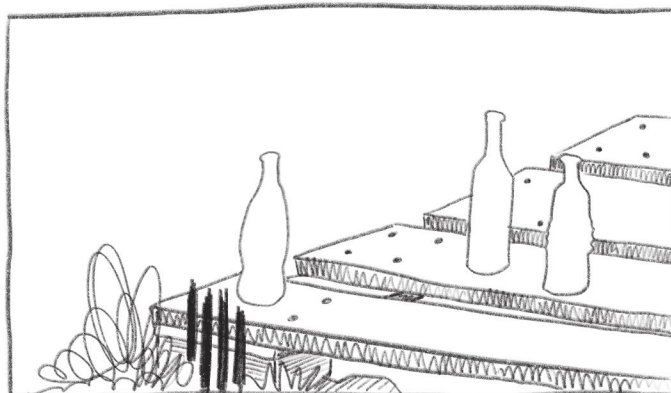
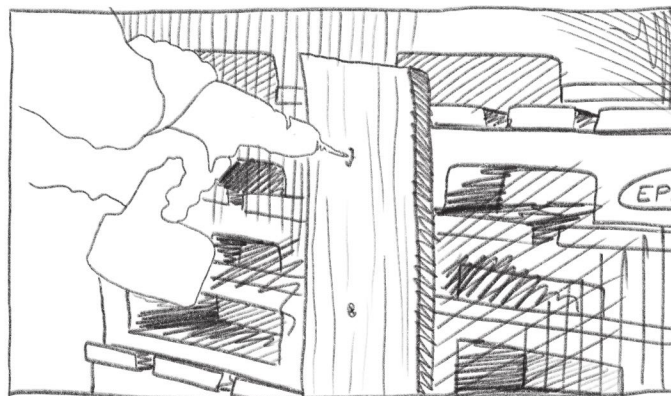
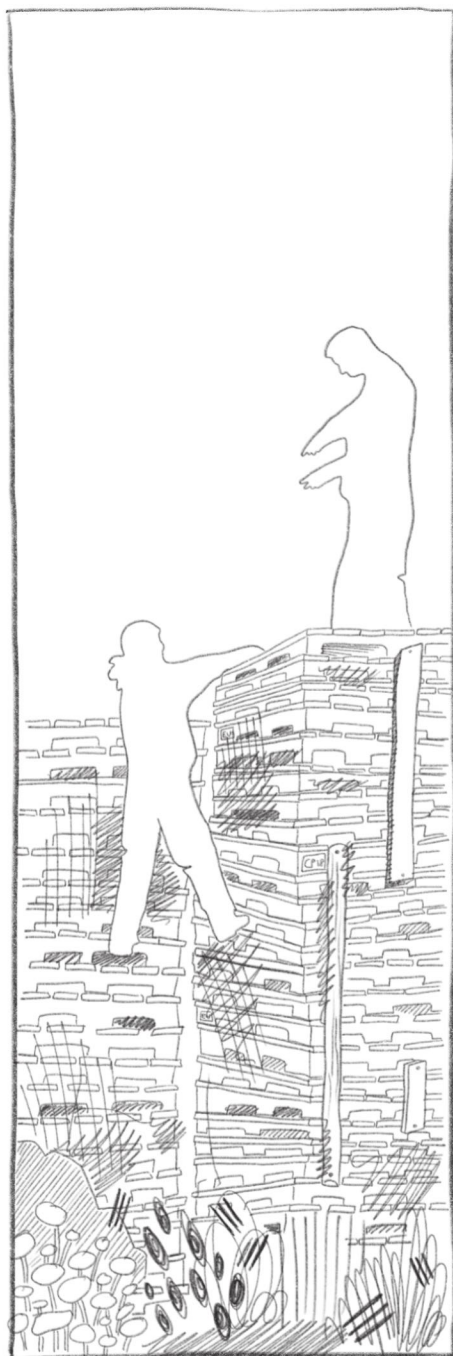


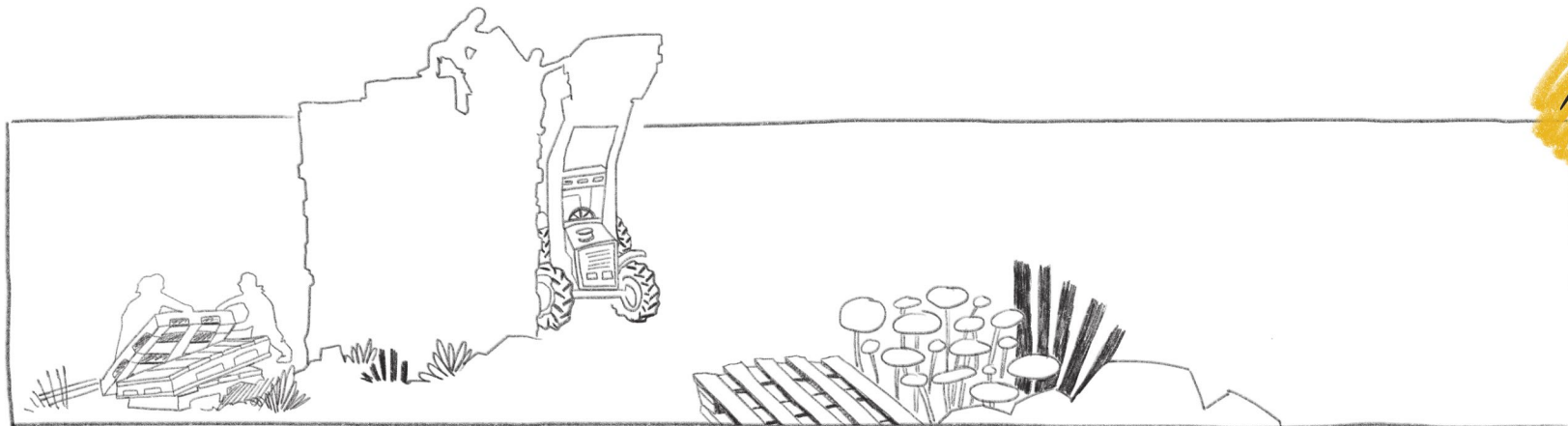


separate yet connected
through background

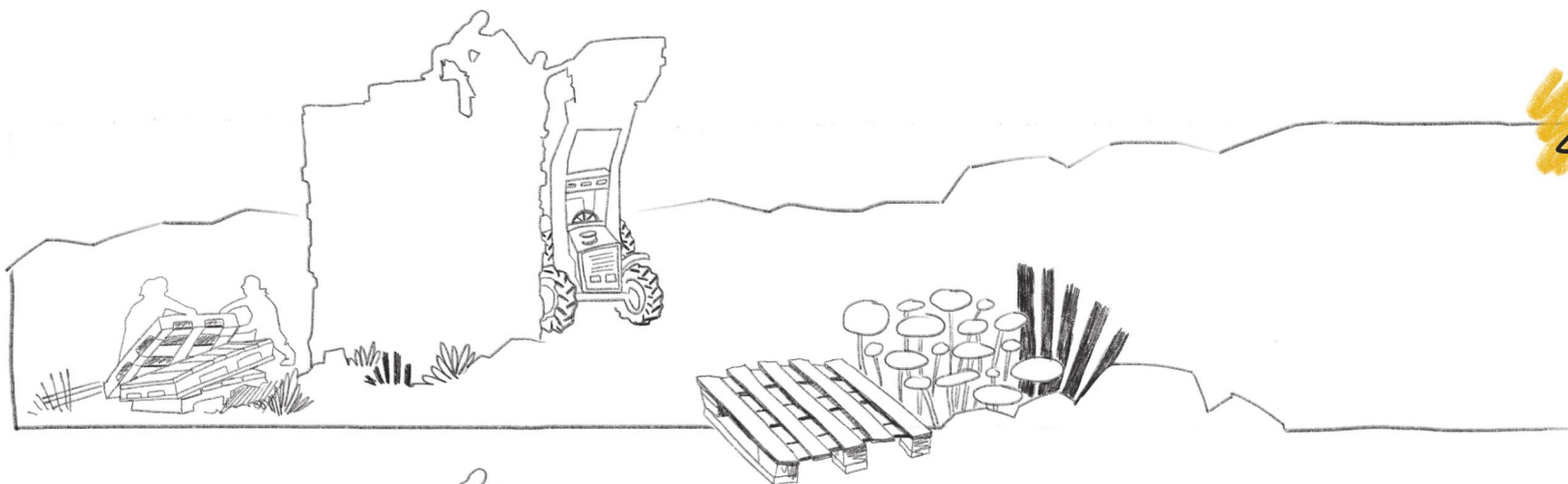




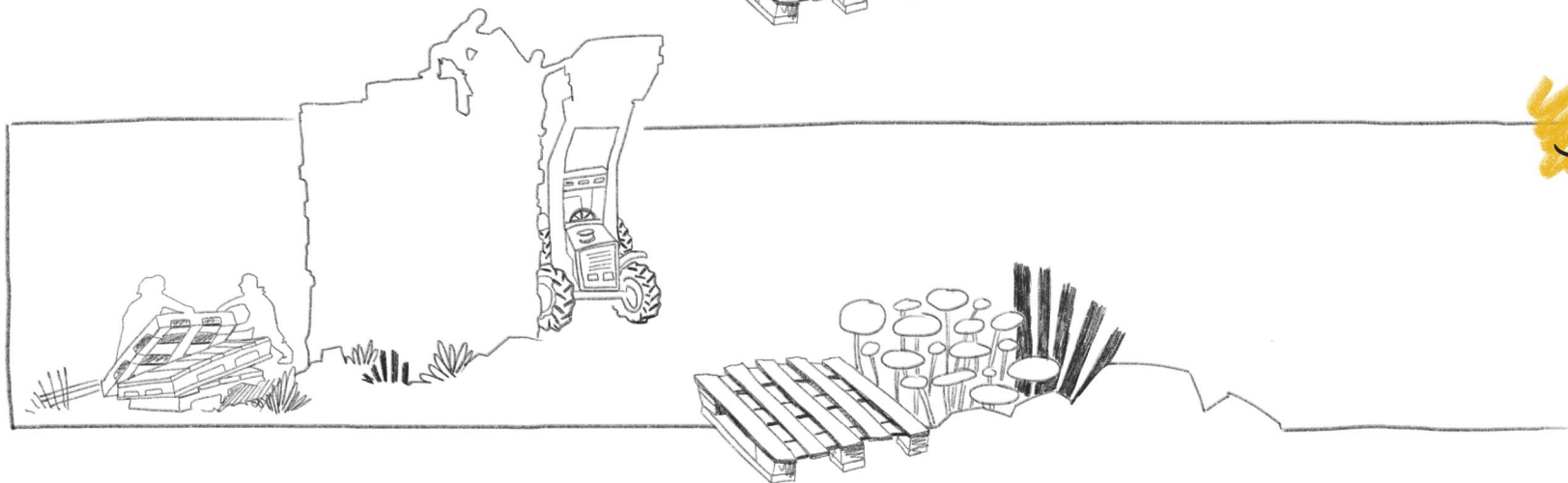




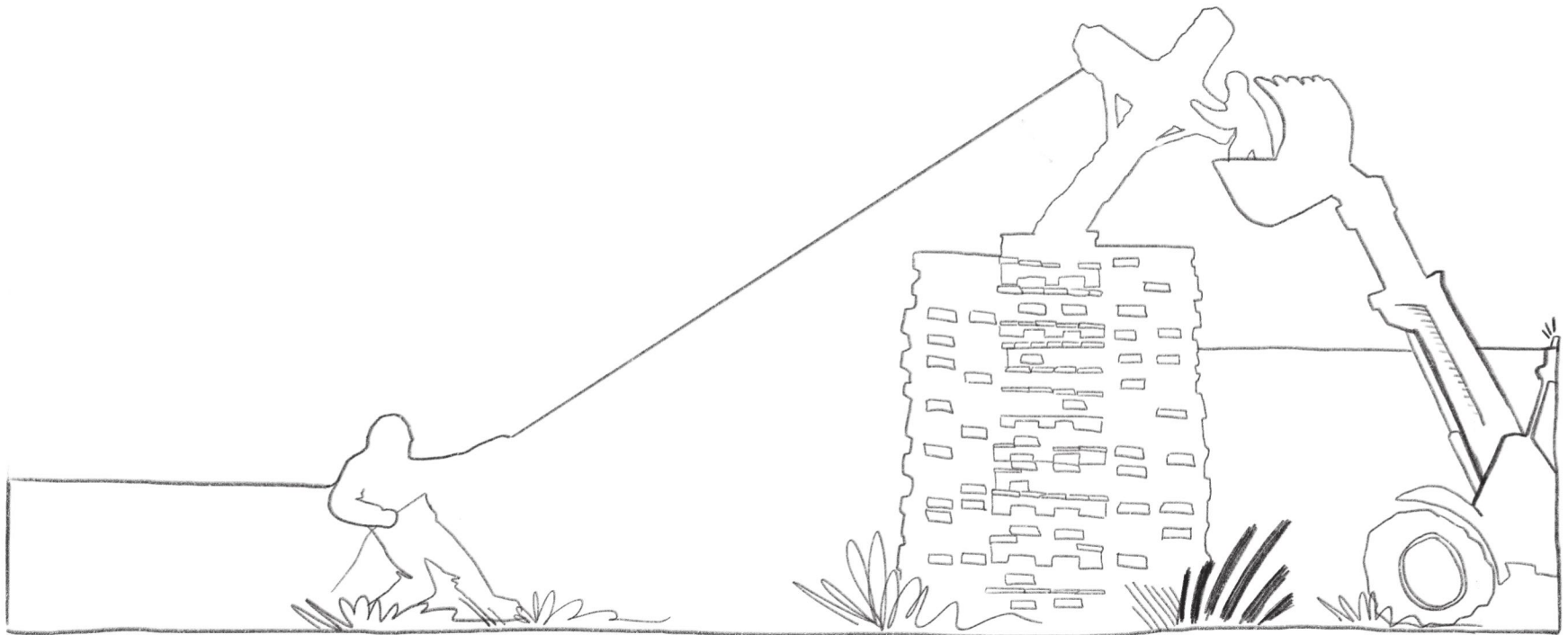
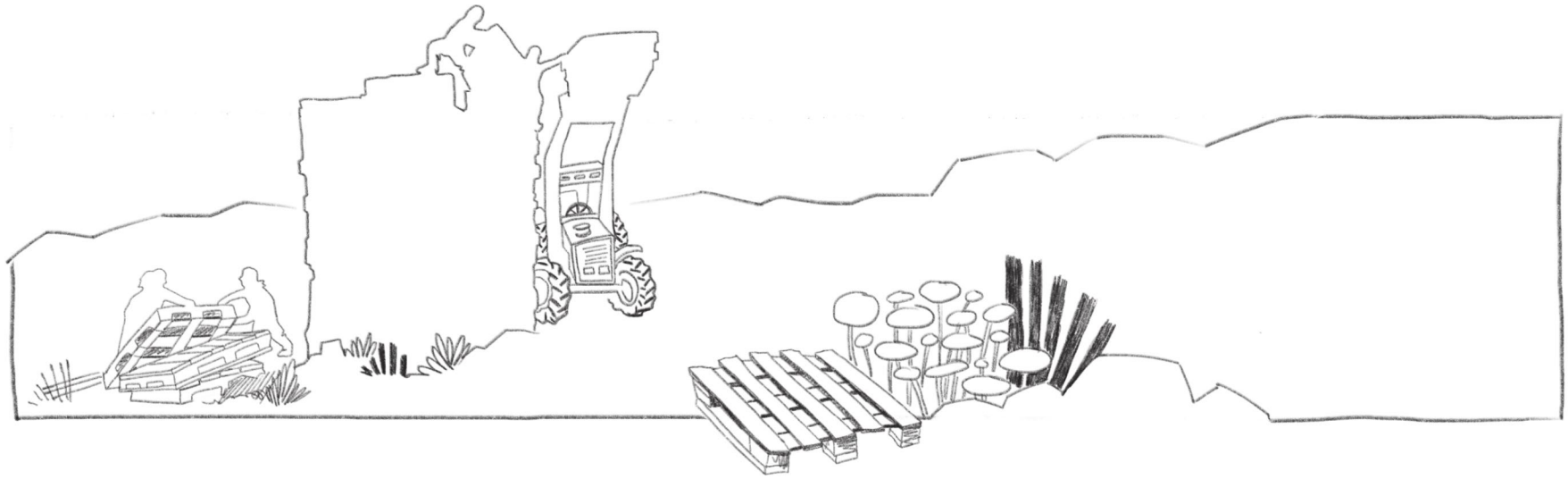
1

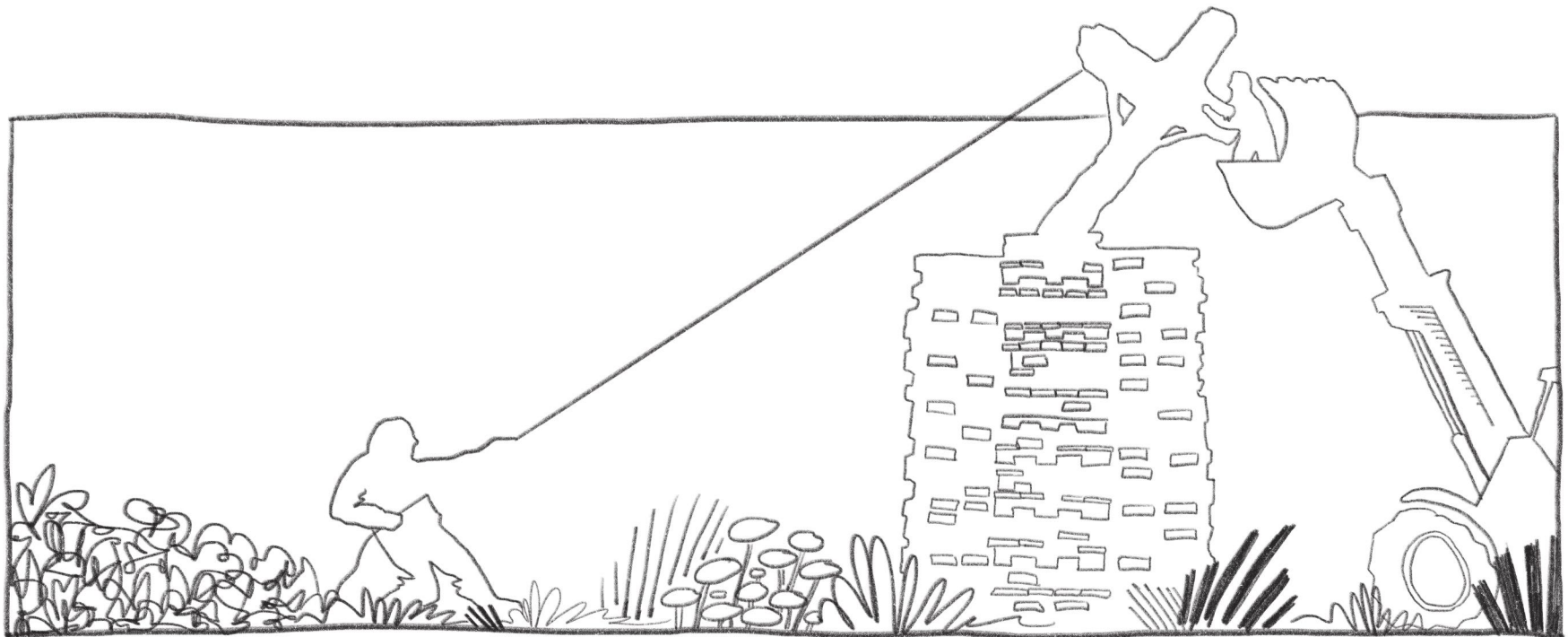
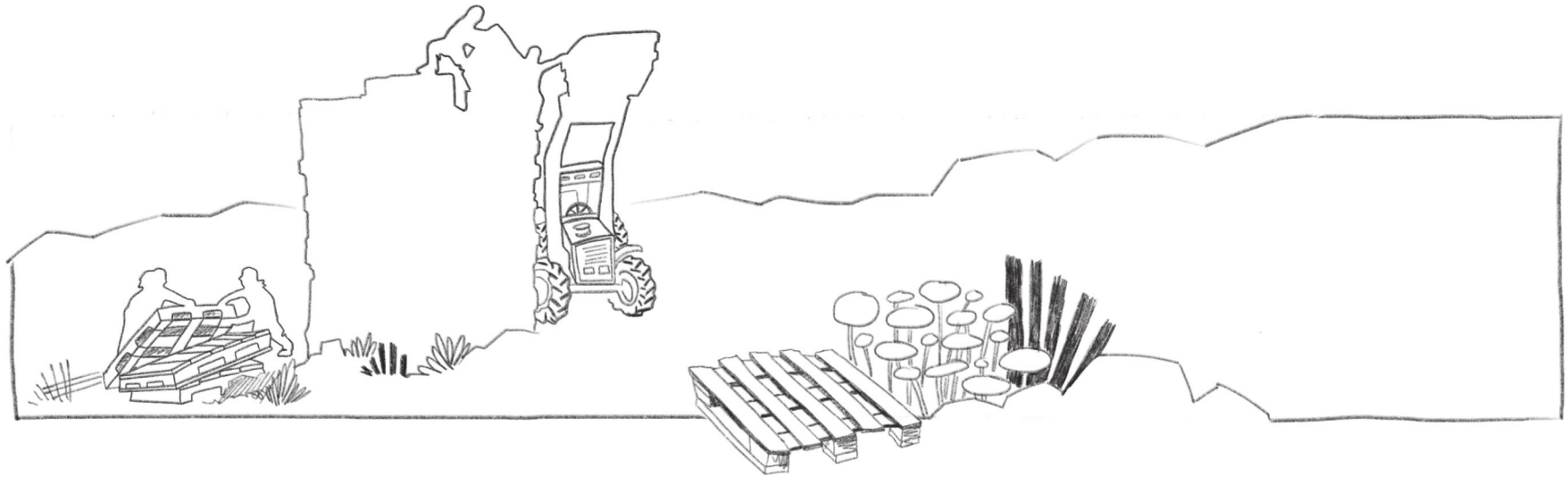


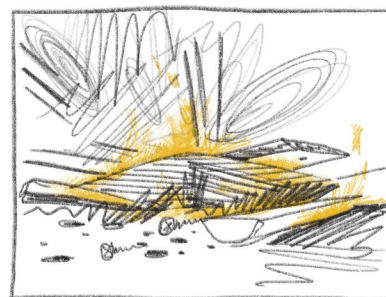
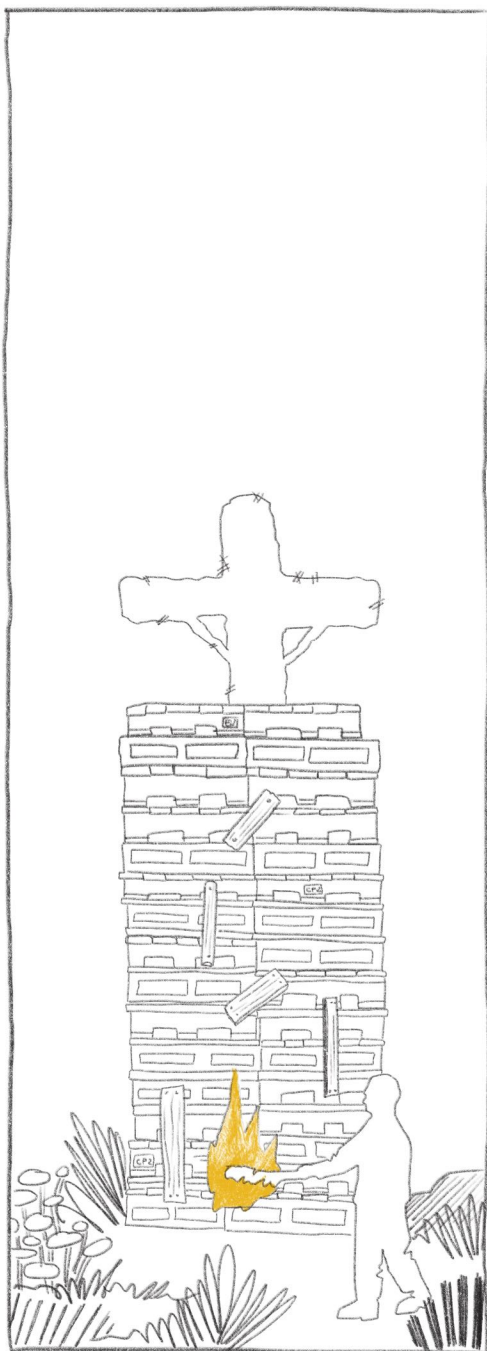
2



3





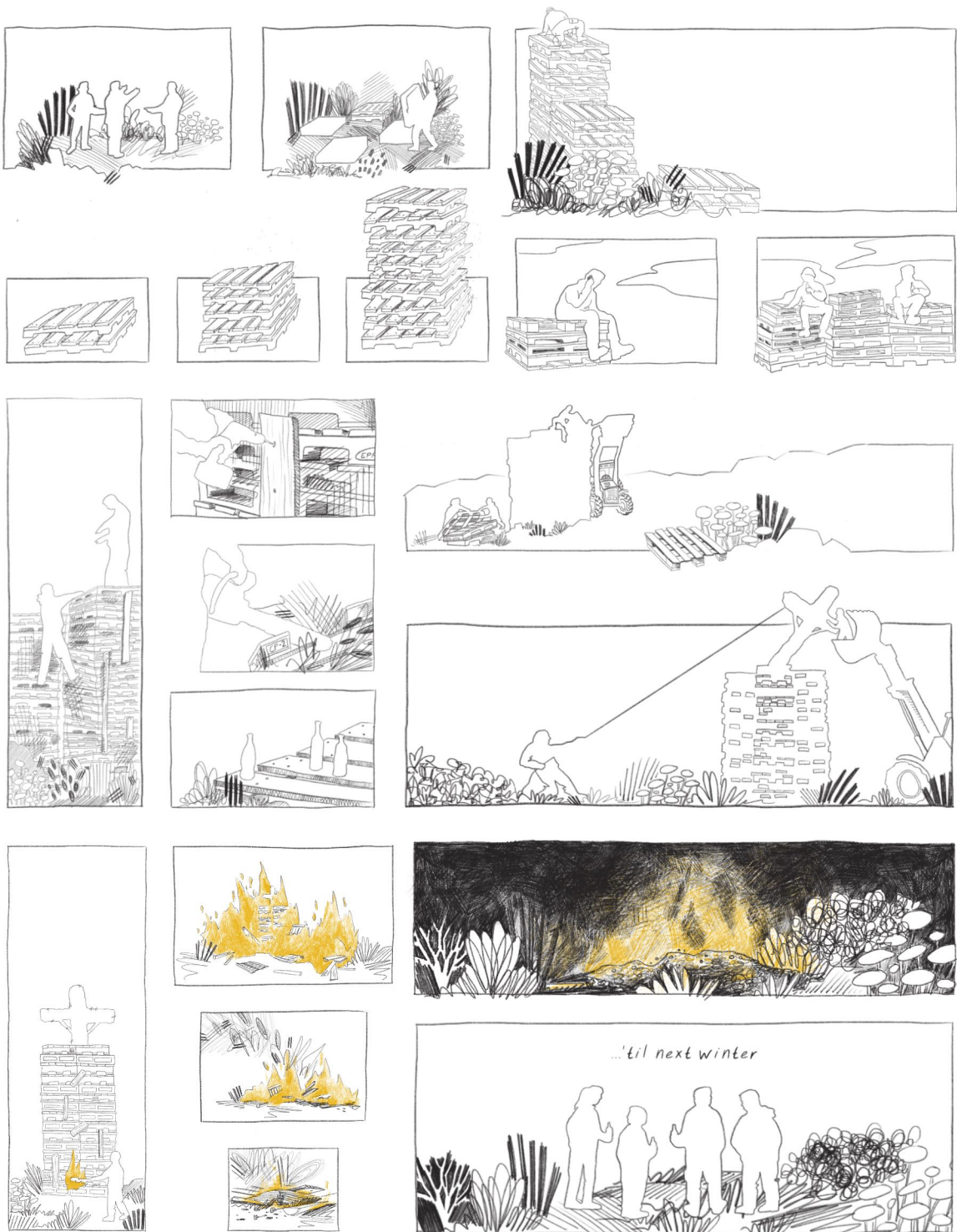


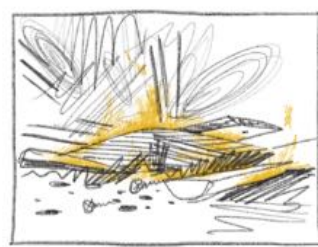
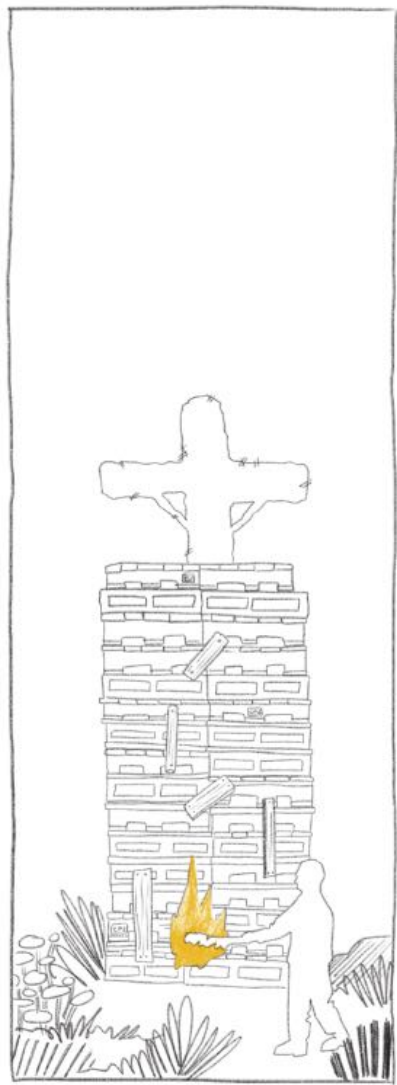
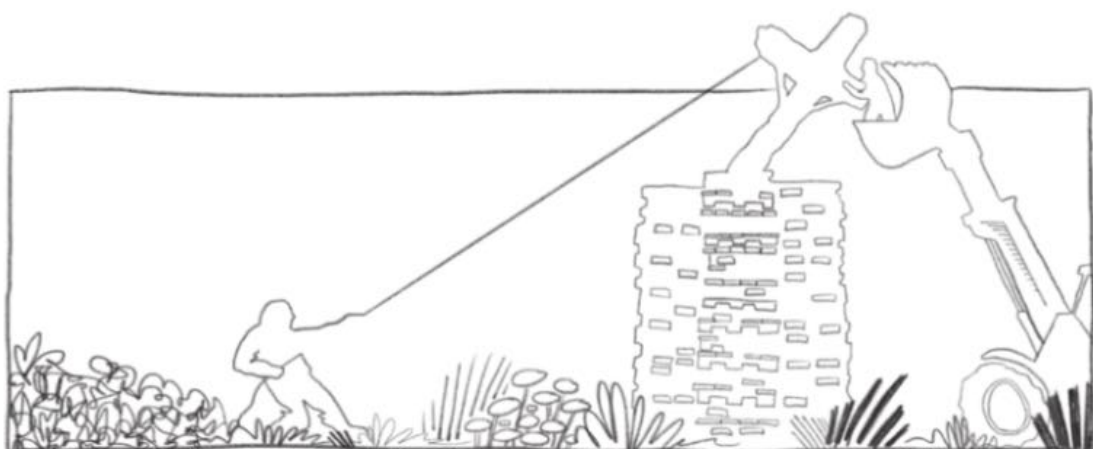
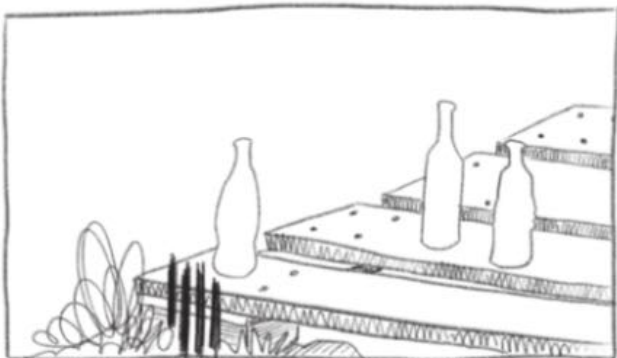
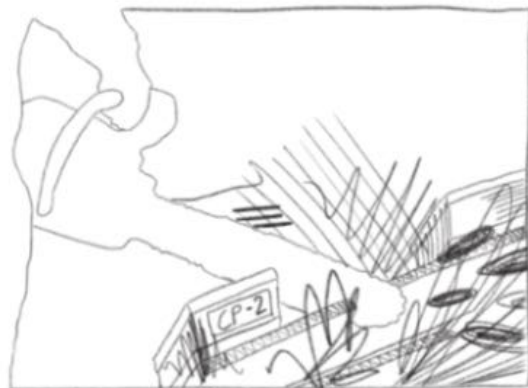
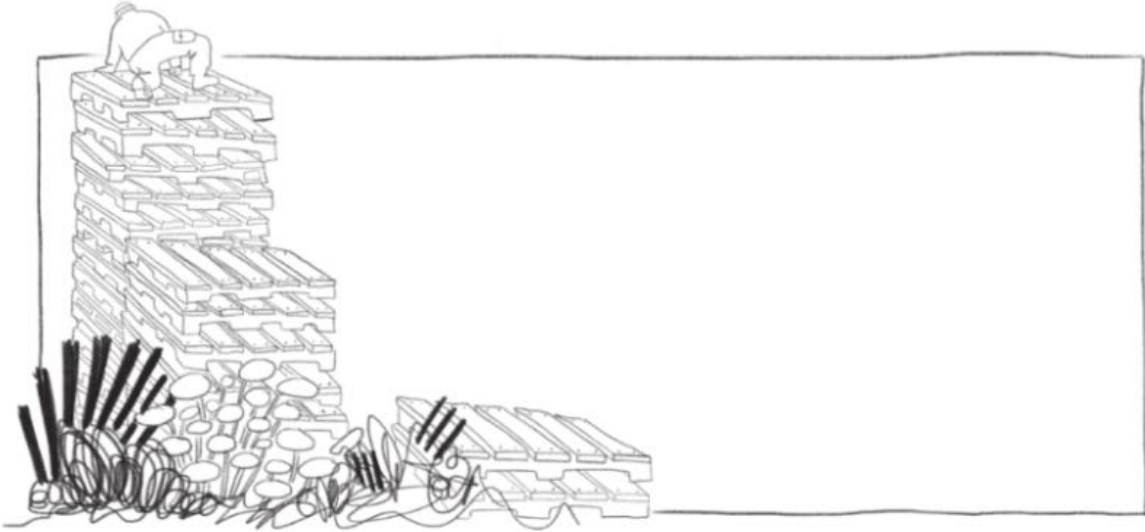
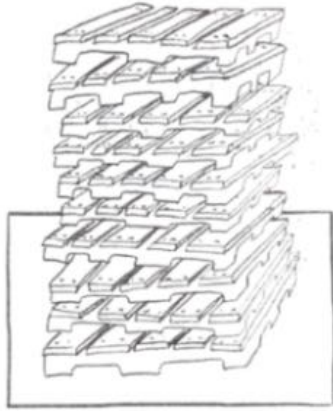
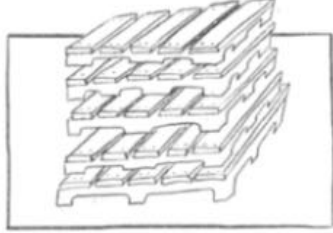
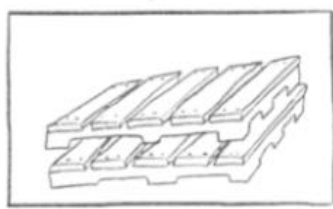
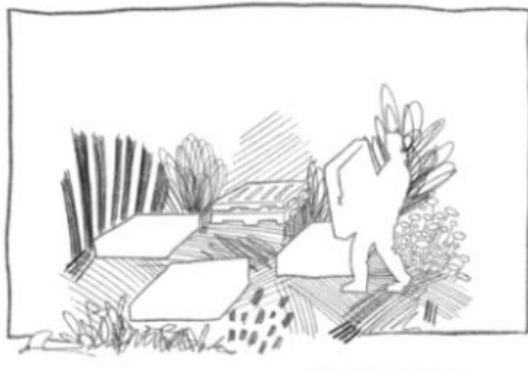


... 'til next winter



full one page comic

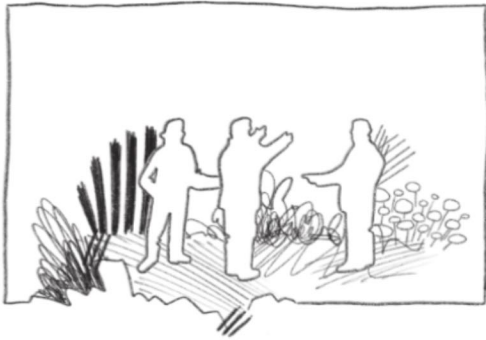




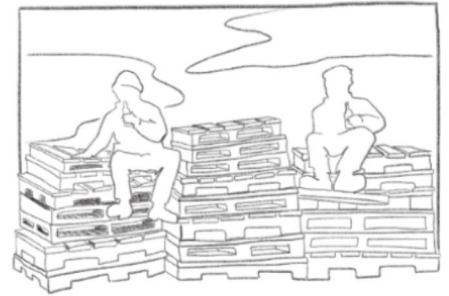
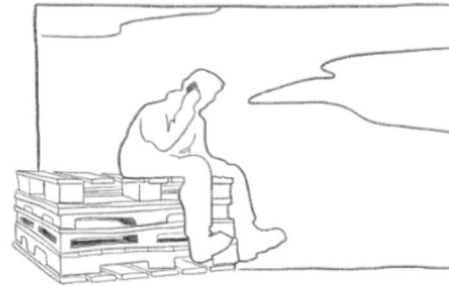
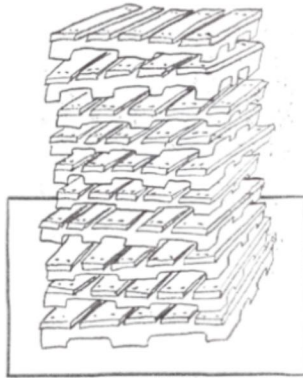
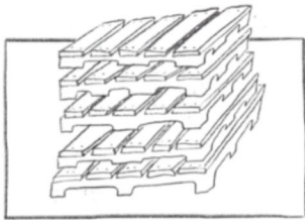
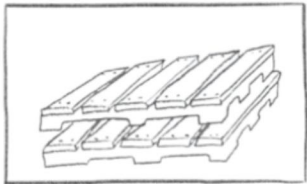
a comic on tradition

Borrëgbrennen

and friendship



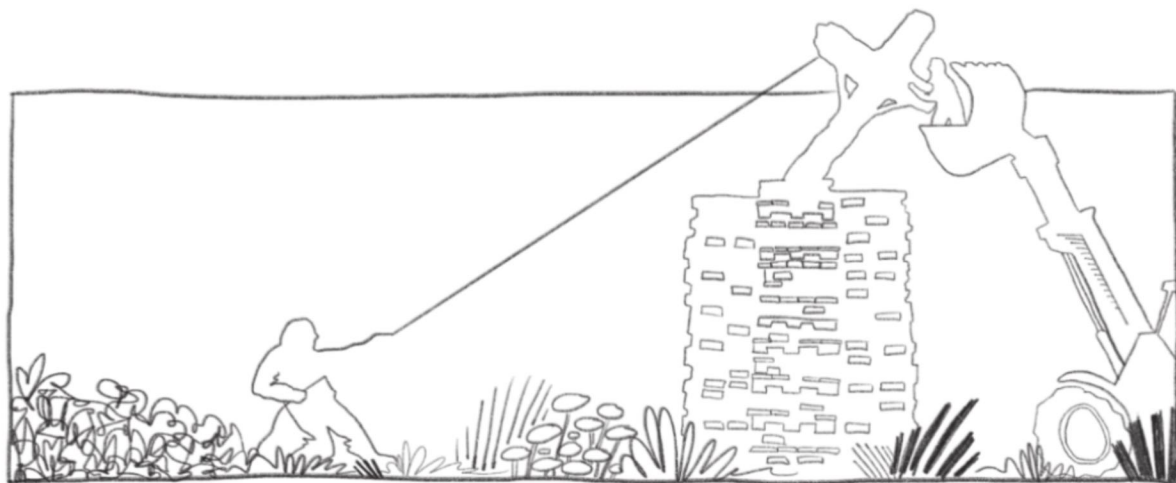
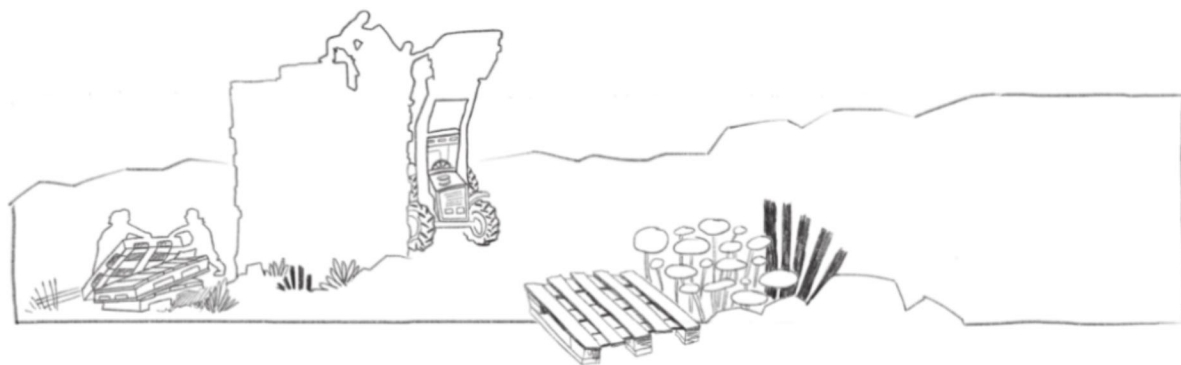
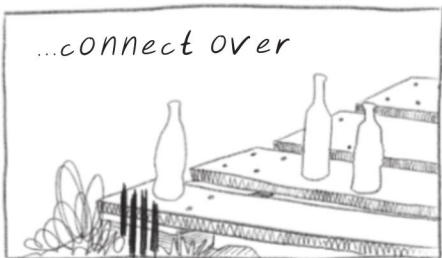
an age-old tradition in our village

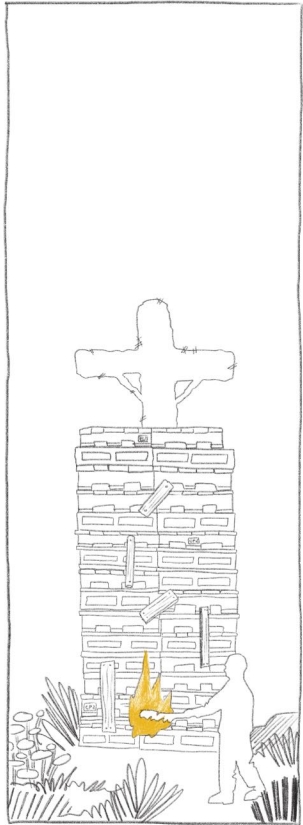


and
something
to...



...connect over

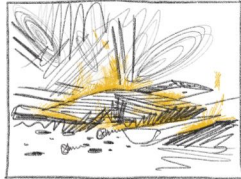


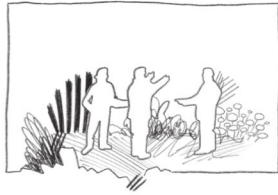


Truth be told, it's almost sad

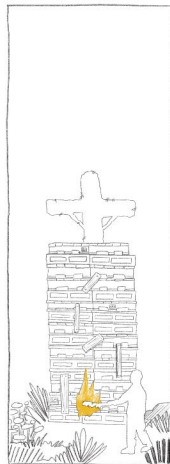
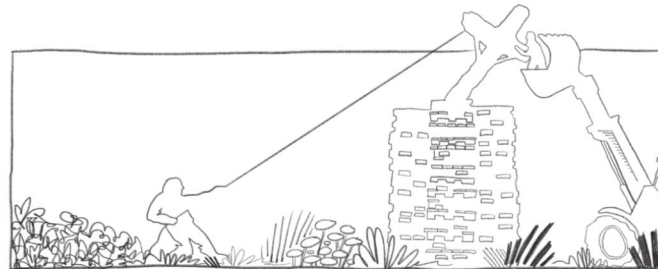
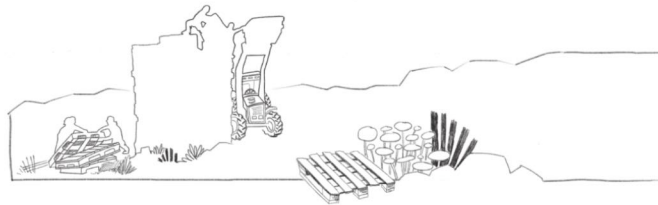
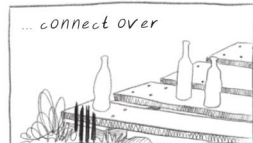
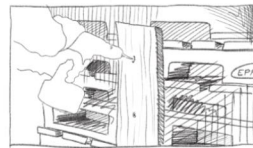
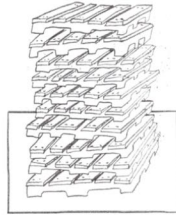
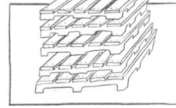
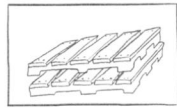


when it finally





an age-old tradition in our village



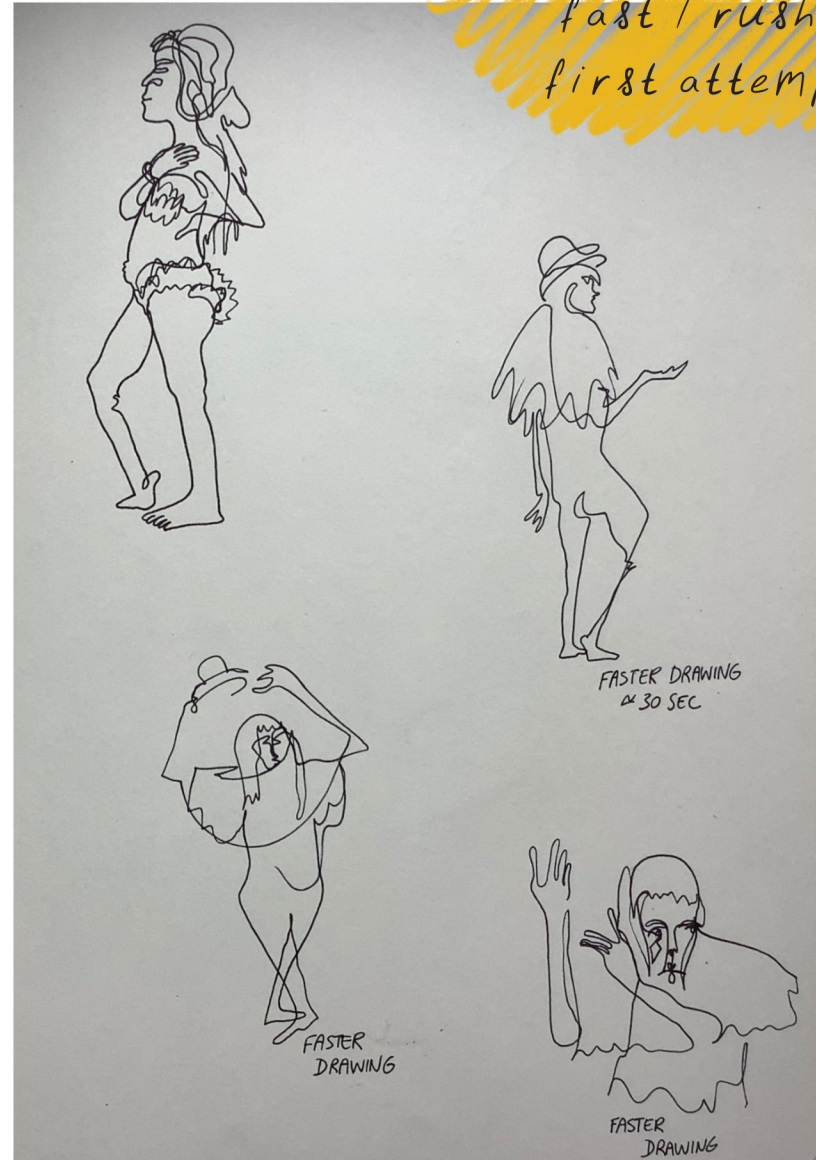
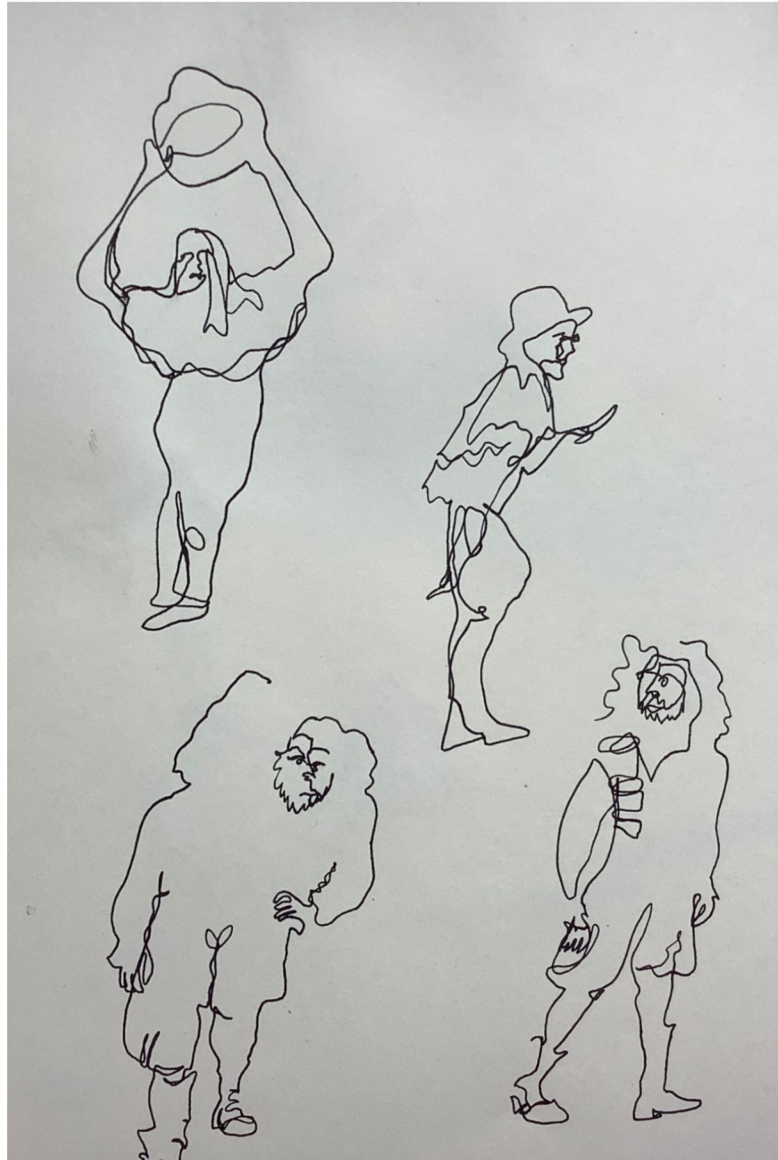
Truth be told, it's almost sad

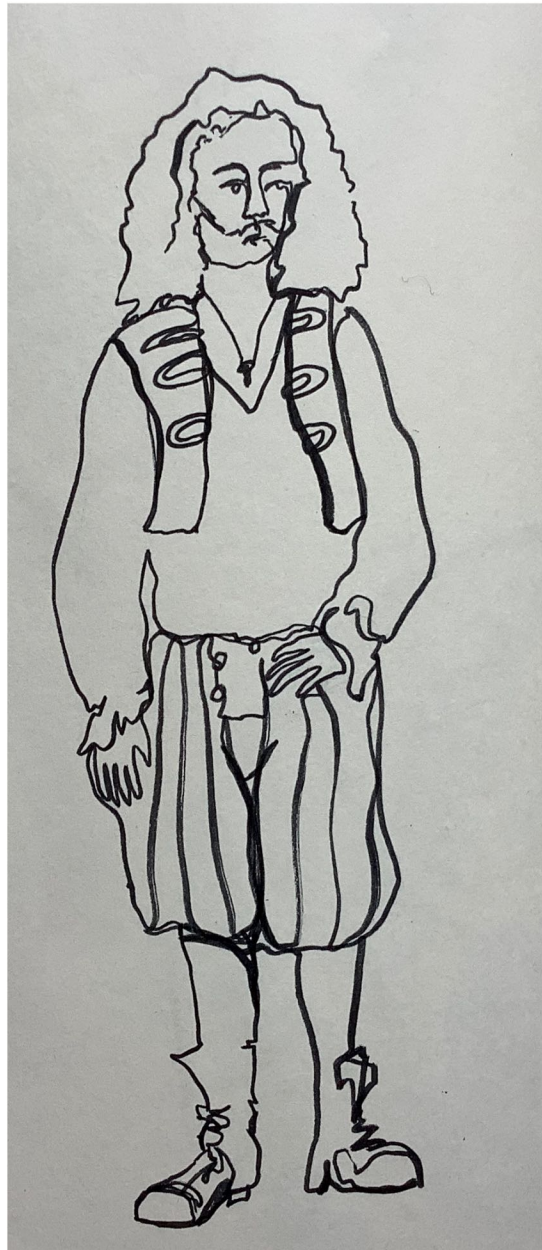


when it finally



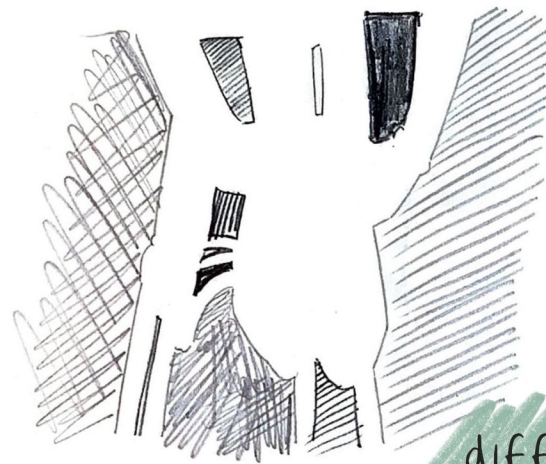
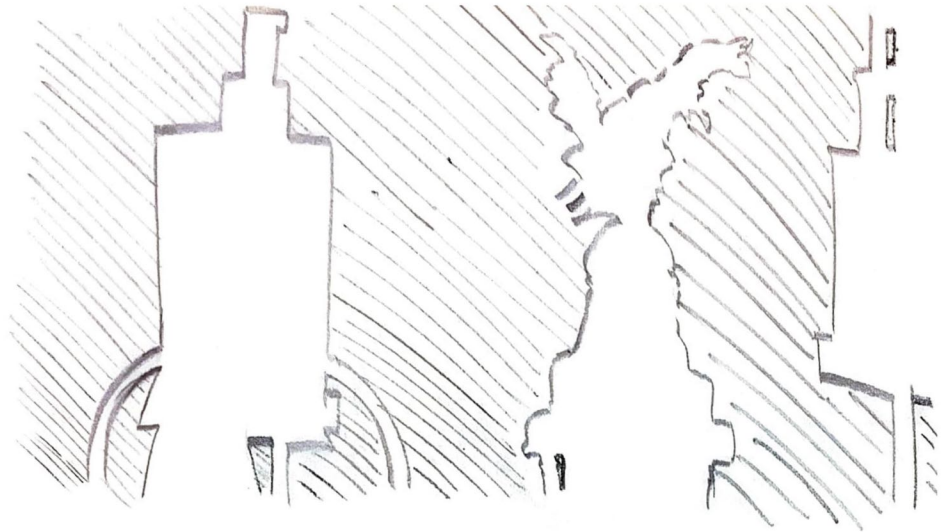
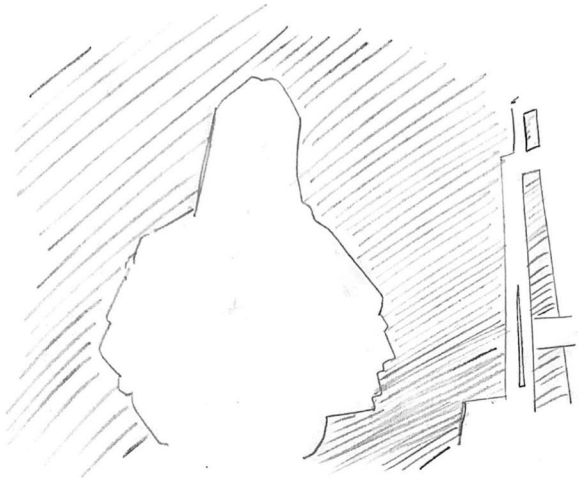
blind contour



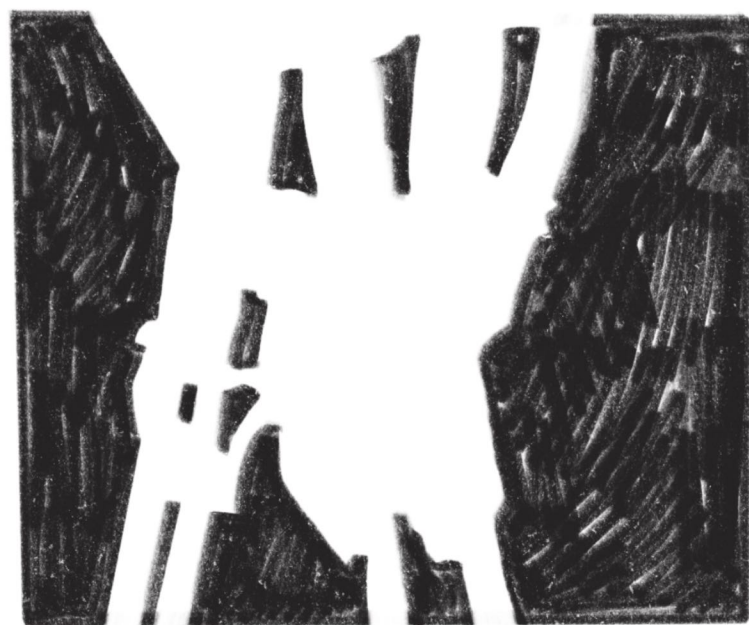


more time

negative space

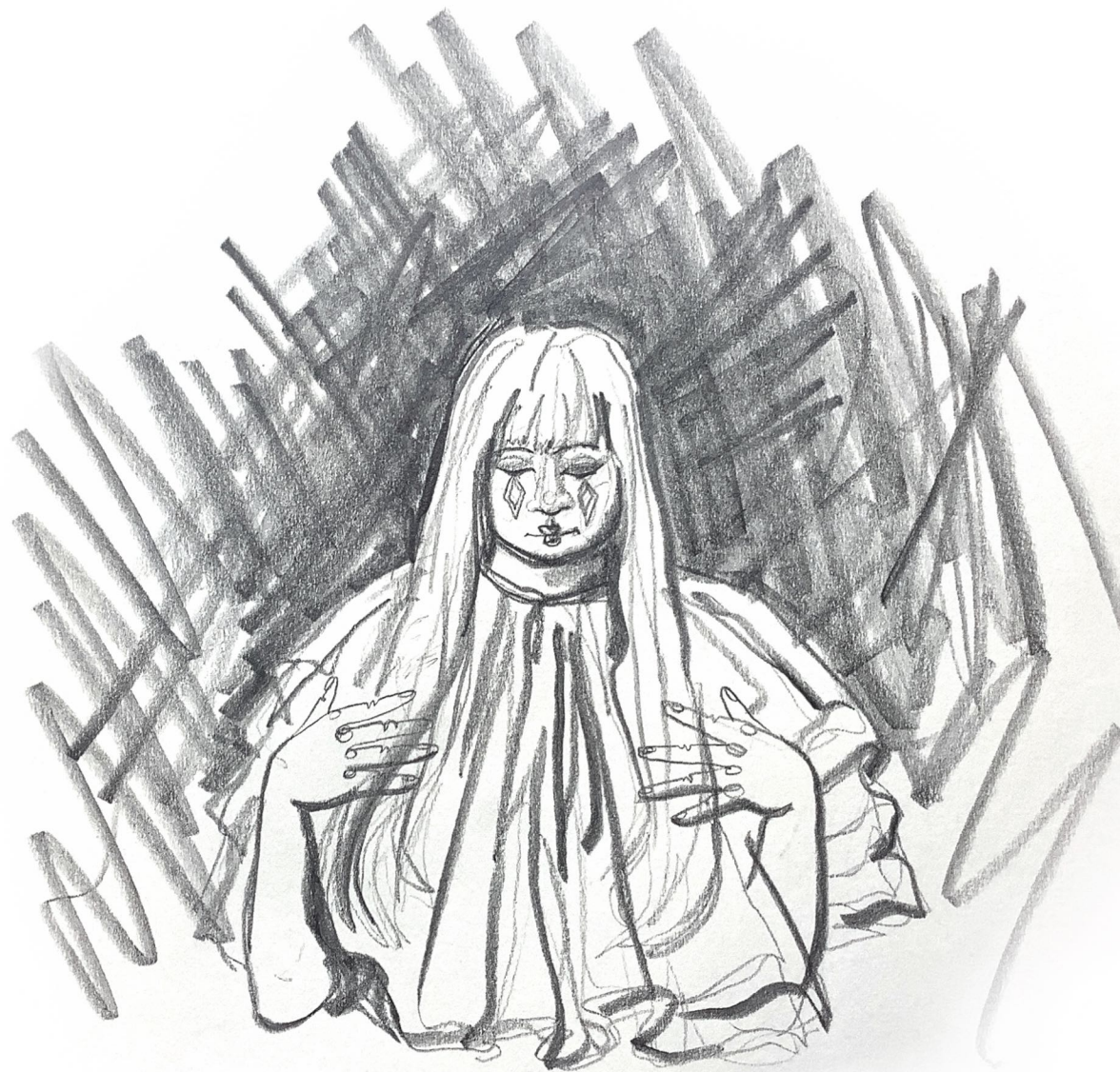


different hatches



varying mark





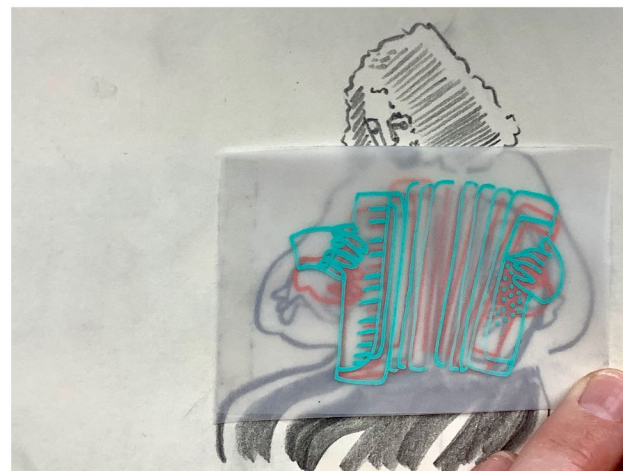
combined marks





capturing movement







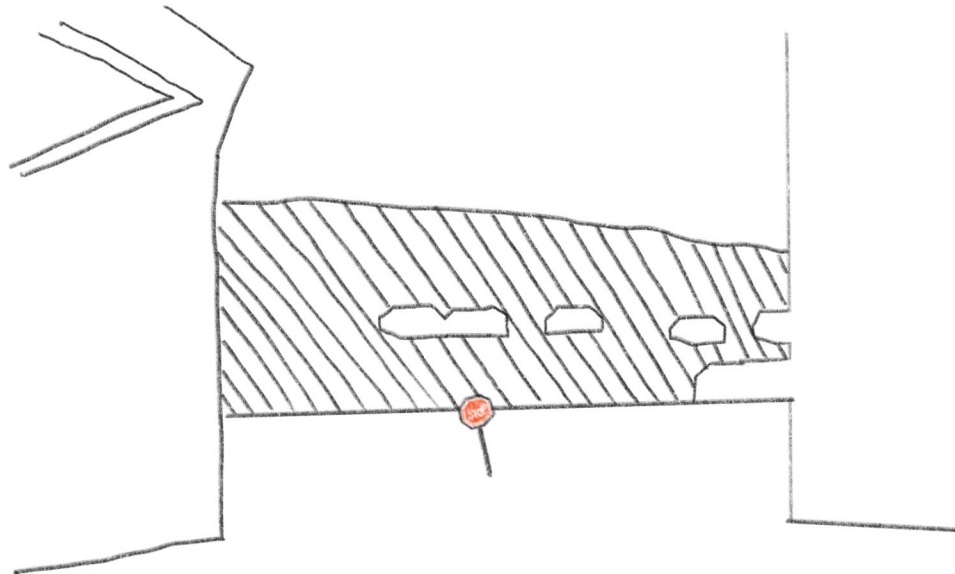
merlin's workshop







1983



construction





MAPPING THE LIFE OF A KITCHEN

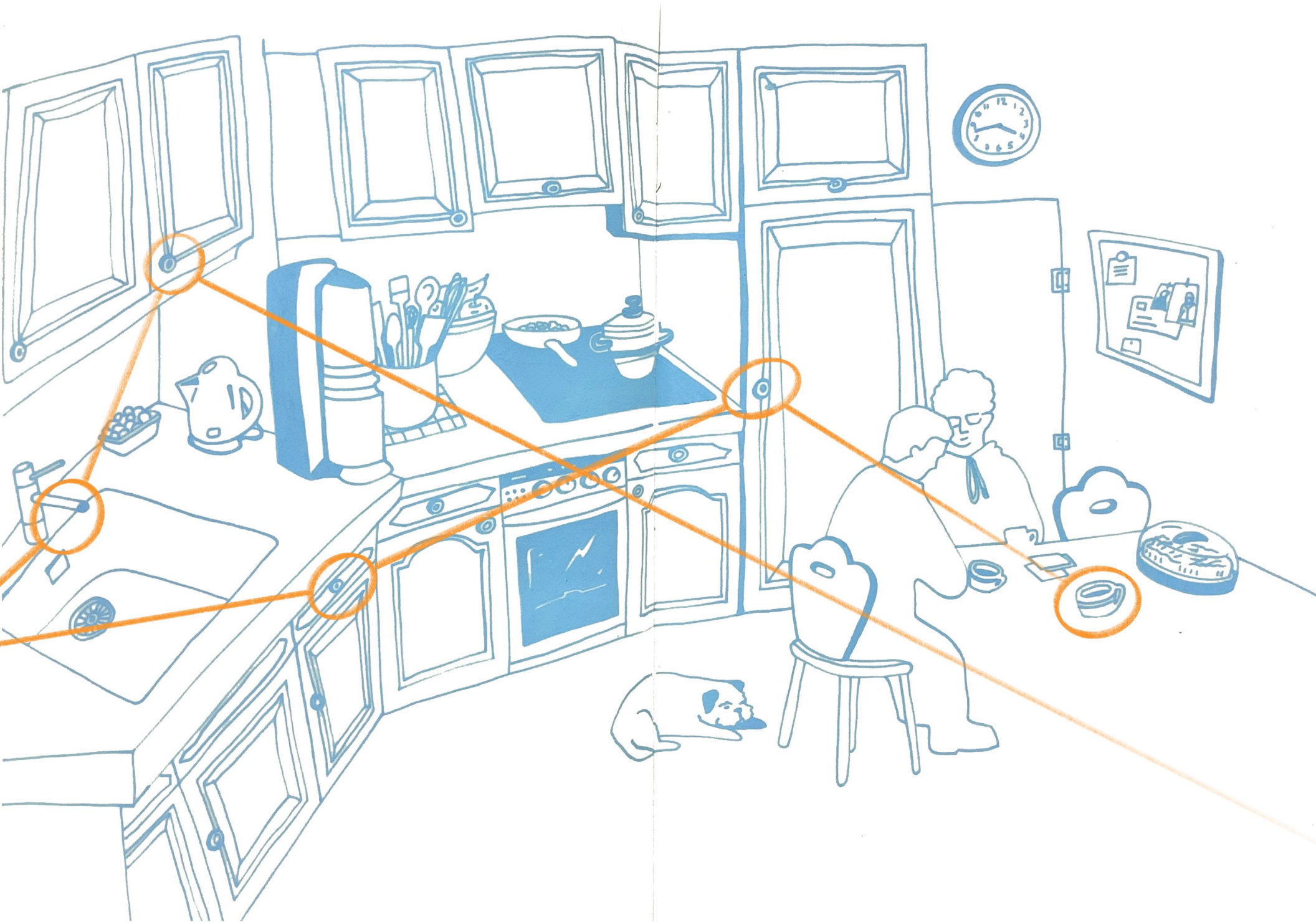
our time together - our movements

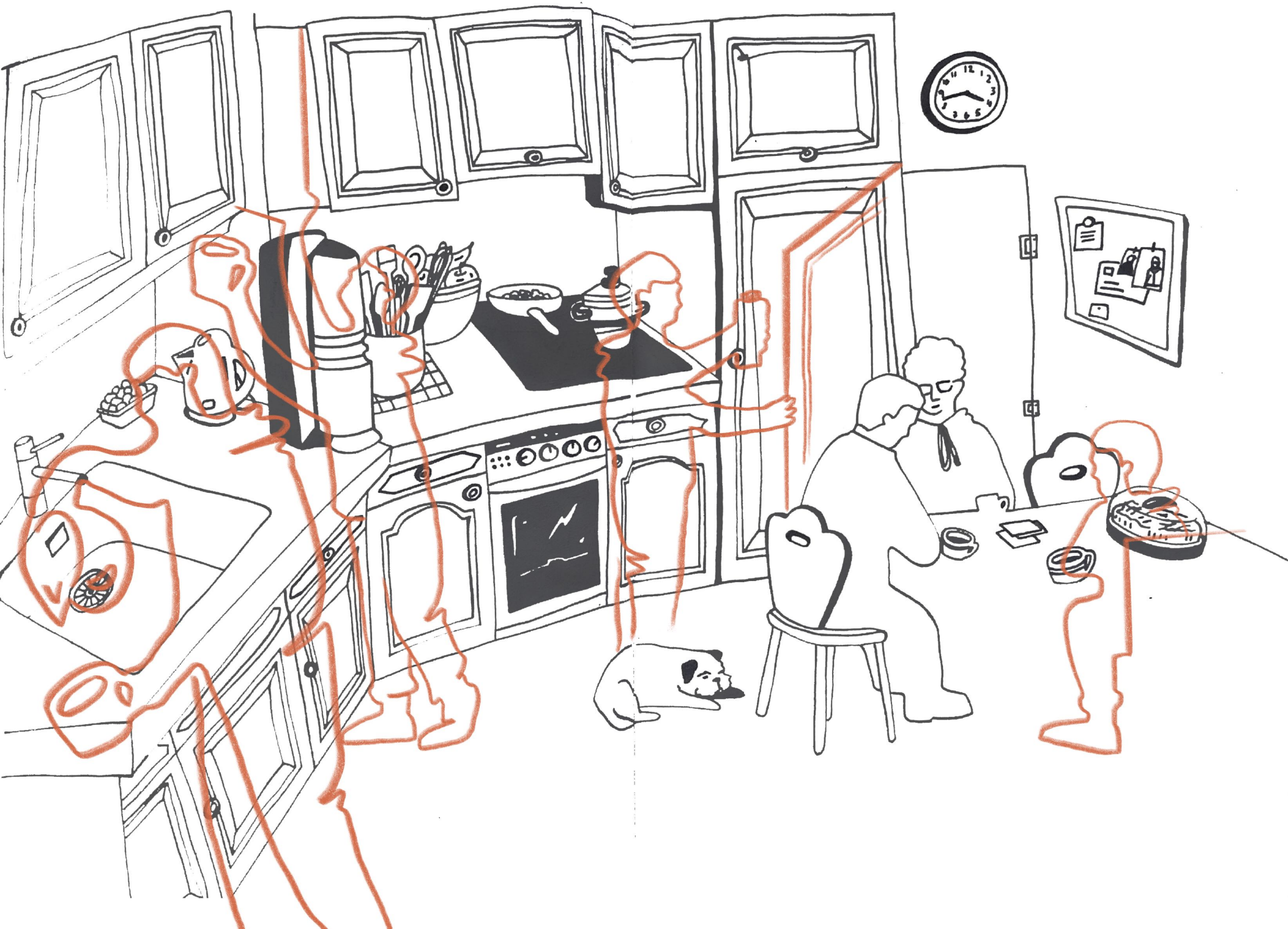
our conversations - our habits

the soul of a space











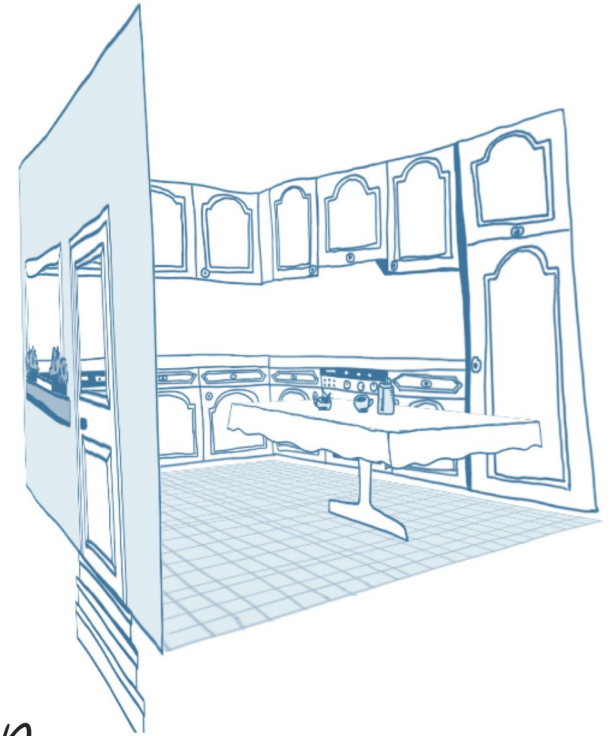
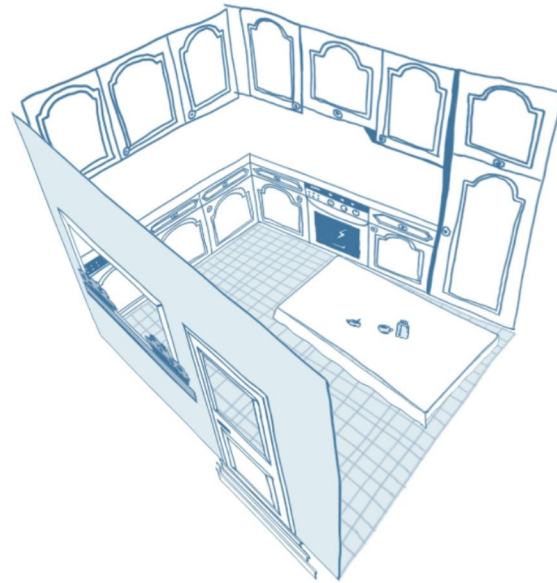
ANYONE WANT SOME
RHUBARB TART ?

YES PLEASE !
I'LL MAKE COFFEE

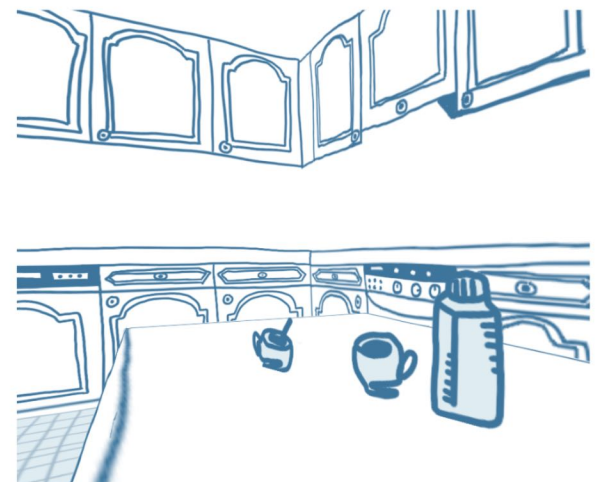
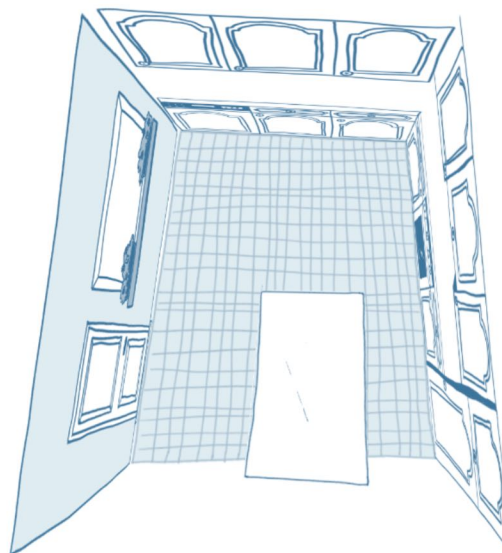
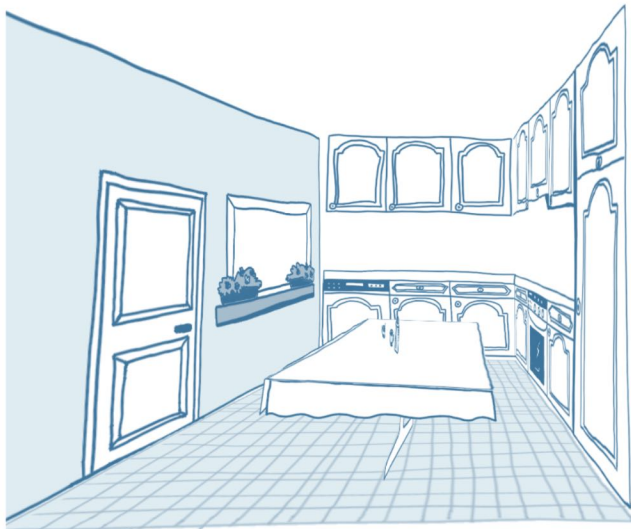
WHAT HAVE
YOU BEEN UP TO TODAY ?

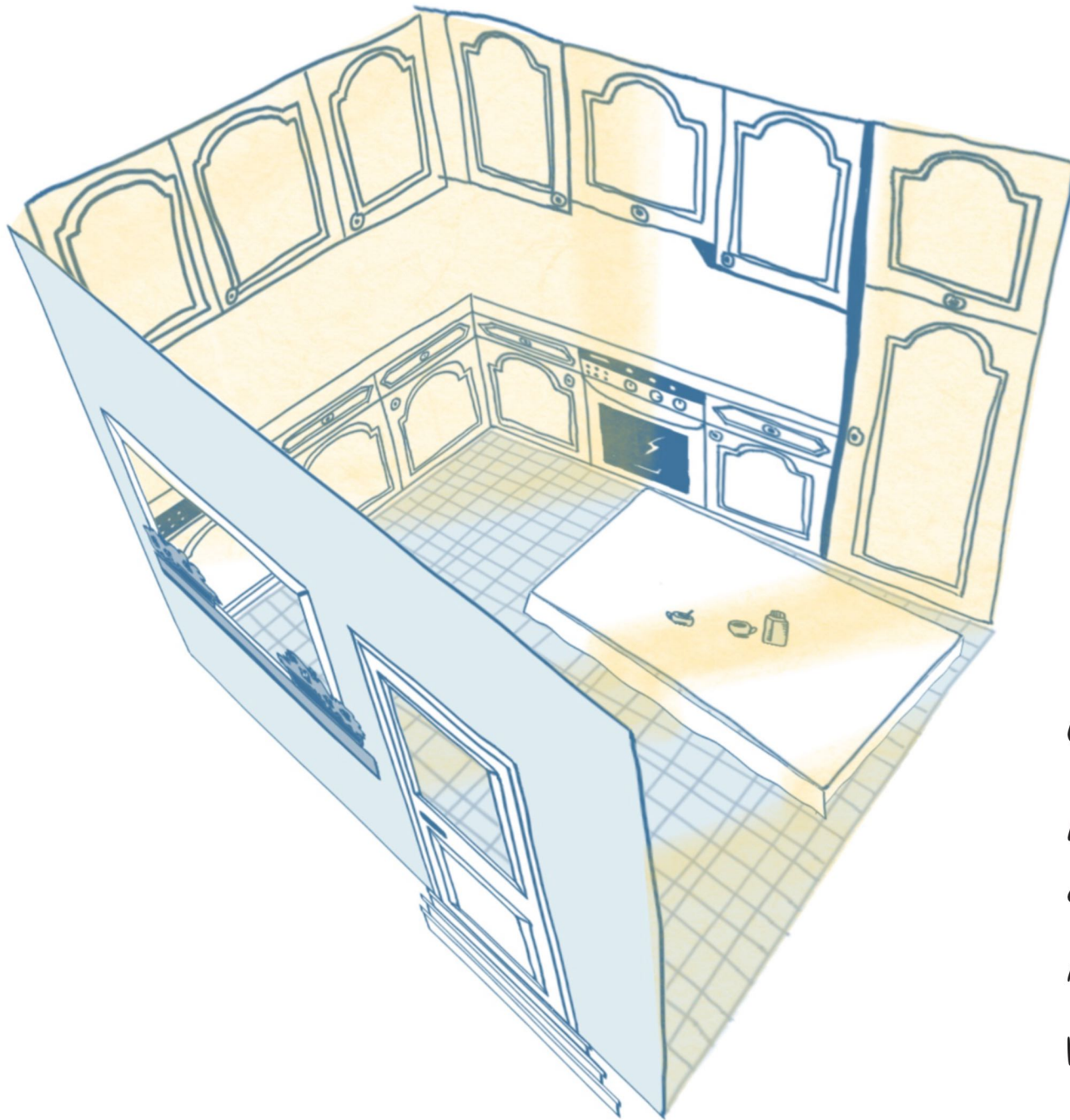
I FOUND THESE OLD
PICTURES ... LOOK !



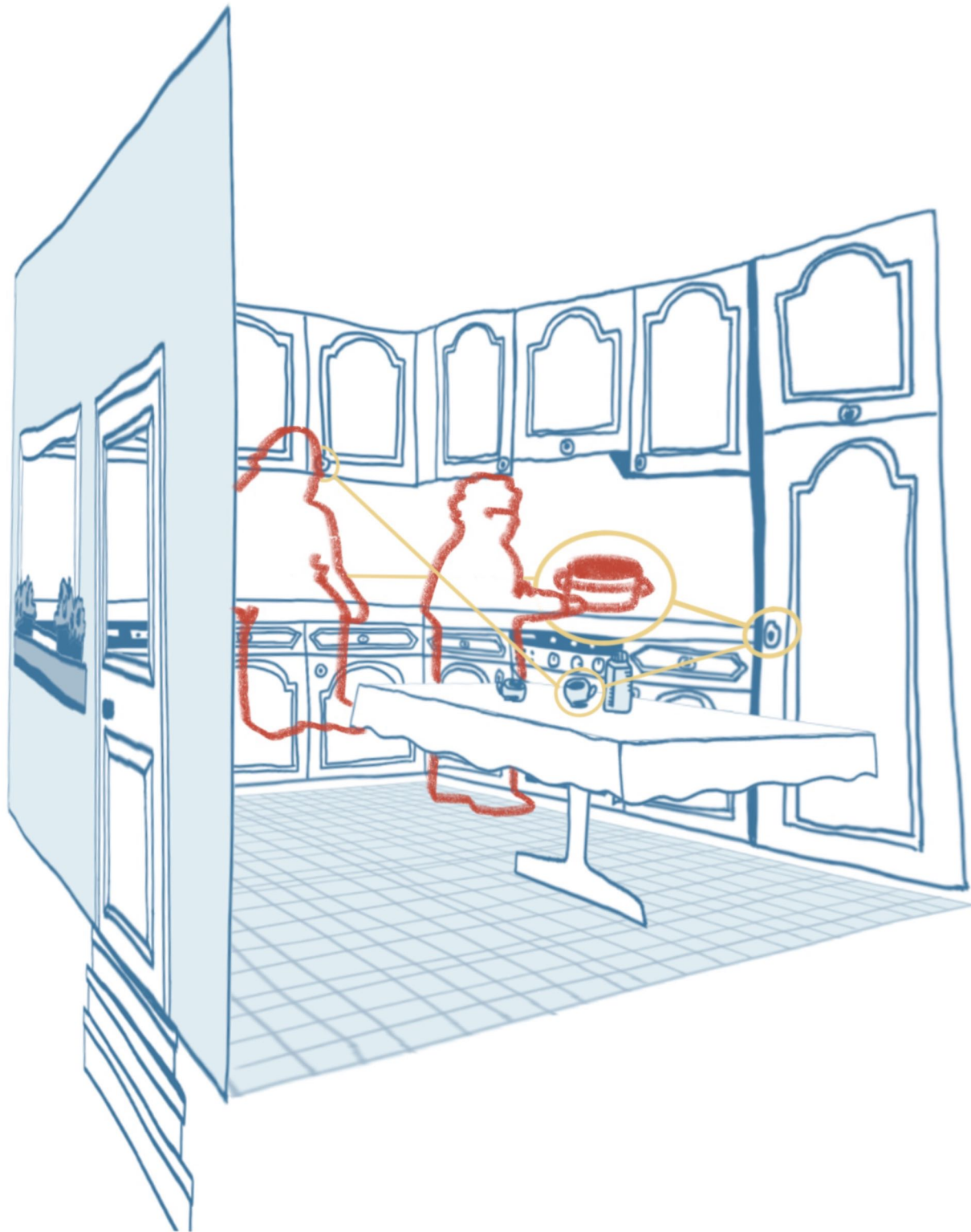


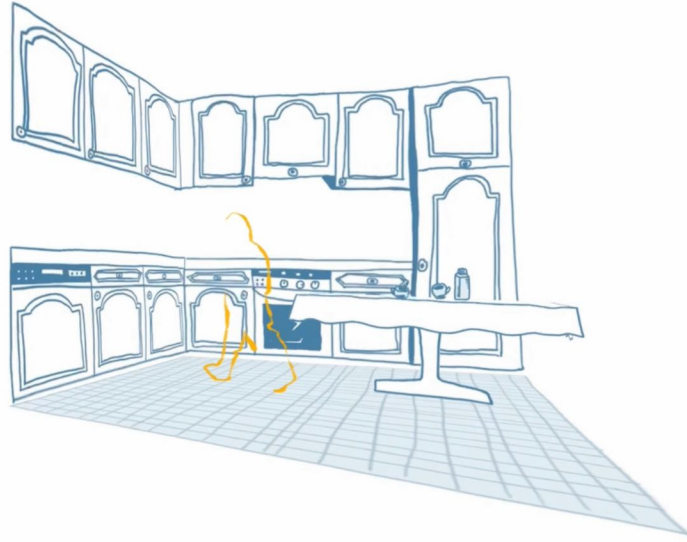
"Boma's" kitchen
3D modelled space





GIF that shows the
passing of time
and the light falling
in through the
windows





Gees de mat bei
d'BOM?

FINAL ANIMATION

DONE in MENTAL CANVES and in CALLIPEG

<https://vimeo.com/693274844>